

THE OFFICIAL MATCHDAY MAGAZINE OF LINCOLN CITY FOOTBALL CLUB

ISSUE 20  
PRICE £3

# #UTI



sky BET LEAGUE TWO EFL



VS



MATCH SPONSOR:

**Vital Lincoln City**  
Raising money for The Impairment Trust

MAN OF THE MATCH SPONSOR:

**TOMMY CARTER  
ASSOCIATES**

MATCH BALL SPONSOR:

**GS HUGHES  
LTD**

LINCOLN CITY VS SWINDON TOWN // 03.02.2018 // KO: 15:00





BISHOP  
GROSSETESTE  
UNIVERSITY

# WORRIED ABOUT RESULTS DAY?

GET YOUR **FREE** RESULTS DAY  
SURVIVAL KIT NOW...JUST IN CASE!

[www.bishopg.ac.uk/JustInCase](http://www.bishopg.ac.uk/JustInCase)

**Sleafordian**  
*coaches* Quality Travel Since 1964

Tel:  
01529 303333  
01529 414242  
Fax: 01529 303324

Visit our website

[www.sleafordian-holidays.co.uk](http://www.sleafordian-holidays.co.uk)

to book your coach seat and  
pay in just a few easy clicks!



@sleafordian



Sleafordian Coaches



@sleafordian

Sleafordian Coaches, Pride Parkway, East Road, Sleaford, Lincolnshire NG34 8GL





## LINCOLN CITY F.C. CLUB DIRECTORY

**Chairman:** Bob Dorrian

**Acting Vice Chairman:** Kevin Cooke

**Directors:** Roger Bates, Richard Clarke, Kevin Cooke, Clive Nates, Herman Kok (The Lindum Group), James Lammin (Red Imps Community Trust), David Parman, Ian Reeve, Steve Tointon (Red Imps Community Trust Gold Members), Jay Wright, Greg Levine.

**Non-Executive Director:** Russell Clarke

**Associate Directors:** Rod Barratt, Philip Bird, Mark Broughton, Trevor Cope, Peter Grant, Charles Jennison, Nigel Underwood, Steff Wright.

**Company Secretary:** Chris Hubbard

**President:** John Jennison

**Vice President:** David Leonard

**Club Doctor:** Dr Chris Batty MB ChB MSc (Sports Medicine)

**Club Chaplain:** Reverend Canon Andrew Vaughan

## FOOTBALL STAFF

**Manager:** Danny Cowley | **Assistant Manager:** Nicky Cowley

**First-Team Coach/U23 Manager:** Jamie McCombe

**Goalkeeper Coach:** Jimmy Walker

**Head of Sports Science & Medicine:** Mike Hine

**Sport Therapist:** Steve Rands

**Head of Sports Science:** Luke Jelly

**Head of Performance Analysis:** Stewart England

**Medical Consultant:** Ross Poynton

**Statistical Analyst:** Matt Page

**Strength & Conditioning/Sports Massage:** Kieran Walker

**Assistant Performance Analyst:** Glenn Skingsley

**Academy Manager:** Damian Froggatt

**Professional Development Lead Coach:** Nick Green

**Head Scout:** Dean West

## ADMINISTRATIVE STAFF

**Chief Executive:** Liam Scully

**Managing Director:** Kevin Cooke

**Operations Manager/Safety Officer:** Darren Curtis

**Head of Legal & Football Administration:** Richard Parnell

**Head Of Community:** Paul Hamnett

**Ticket Office Manager:** Dawn Cussens

**Business Operations Manager:** Ian McCallum

**Accounts Assistant:** Mandy Richardson

**Commercial Director:** Ritchie Bates

**Assistant Commercial Manager:** Jake Longworth

**Media Consultant:** Terry Hibberd

**Media Assistant:** Jordan Brown

**Clerical Support/Lottery Administrator:** Nicol Smith

**Ticket Office Assistant:** Joanne Dawson

**Ticket Office Assistant:** Melissa Poole

**Shop Manager:** Karen Payne

**Supporter Liaison Officer:** Alan Long

**Head Groundsman:** Phil Kime

**Assistant Groundsman:** Paul Ash

**Kit & Operations Manager:** Terry Bourne

**Kit Manager:** Dick Tacey



**Contributors:** Terry Hibberd, Jordan Brown, Chris Ashton, Gary Parle, Gary Hutchinson, Jonathan Battersby, Derek Priestley, Chris Williams, Rob Mason, Matt Goodwin.

**Photography:** Andrew Vaughan, Chris Vaughan Photography, Graham Burrell, Cameraport, Rex Features LTD/Shutterstock, PA Images.



UTI is produced in partnership with  
Ignition Sports Media.

# WELCOME

After Tuesday's night's fantastic 3-1 victory over fellow promotion-chasers Newport County, we welcome another side who are in the hunt for a play-off place in Swindon Town to Sincil Bank. The Robins are two points and two places above Lincoln in the table and they also enjoyed victory in midweek after defeating Stevenage 1-0 at Broadhall Way courtesy of an Ollie Banks goal.

Danny Cowley was busy on transfer deadline day as he landed the signature of Stevenage's Tom Pett. The midfielder signed a two-and-a-half-year contract after the Imps paid an undisclosed fee for the 26-year-old, who could make his debut today.

Also hoping to make his bow is central-defender Scott Wharton who signed on loan from Blackburn Rovers until the end of the season on deadline day. A left-sided centre-back, the 20-year-old has experience with Cambridge United out on loan and has featured twice for the Ewood Park side this term.

Newport boss David Flitcroft secured the loan signing of defender Rollin Menayese from Bristol Rovers until the end of the season, whilst James Brophy went the other way by joining Leyton Orient and John Goddard also departed for Stevenage.

As far as injuries are concerned, the Imps will be without Josh Vickers who suffered a setback in his bid to return from injury this week. Brought in to ease the goalkeeping situation was Bournemouth's Ryan Allsopp, who joins on loan from the Cherries on a deal until the end of the season.

Meanwhile, the Robins will be without Chris Hussey who is recovering from a hernia operation, and Amine Linganzi is still a few weeks away from recovering from injury. Aside from long-term absentee Dion Conroy, this weekend's game is also too soon for midfielder Donal McDermott.

## SAFETY MESSAGE

This is an important safety reminder to all supporters that it is an offence to bring fireworks, flares and smoke emitting devices into a football ground and we would like to reinforce our message that we adopt and enforce a clear policy to prevent and prohibit spectators attempting to do so at Sincil Bank.

We encourage any supporters to contact the 'Safe Text' line on 07384271937 to anonymously share information were they to experience any safety issues in or around the stadium.

Around the country football clubs and police forces are taking a zero tolerance approach on all related matters so this reminder goes out to all Imps' fans, be it at home or travelling away, that anyone seen in possession or seen to throw a flare or smoke bomb is liable to arrest and a subsequent banning order.



**KICK IT OUT**  
TACKLING RACISM & DISCRIMINATION



**DOWNLOAD OUR FREE  
REPORTING APP  
TO CONFIDENTIALLY REPORT  
FOOTBALL-BASED DISCRIMINATION**

(professional, non-league, grassroots and social media)



FACEBOOK/KICKITOUTOFFICIAL



@KICKITOUT



@KICKITOUT



INFO@KICKITOUT.ORG



0800 169 9414





**NEW SIGNING!**  
**RYAN ALLSOP**



**NEW SIGNING!**  
**SCOTT WHARTON**



# A BUSY TRANSFER WINDOW AT SINCIL BANK...

**I**t's been a busy January at the club with no less than eight players coming into the first-team squad over the course of the month.

We welcomed Danny Rowe, Lee Frecklington, Ellis Chapman who signed his first pro contract, James Wilson, Jordan Williams, Tom Pett, Scott Wharton and Ryan Allsop.

The first player in was Rowe on 2nd January and he's already made his mark after opening his scoring account for the Imps in the Checktrade Trophy, then on the 11th, there was a double signing.

A returning youth team player and the latest through the ranks at Sincil Bank were unveiled to the press. Lee Frecklington and Ellis Chapman respectively, Frecklington

immediately announced his return to the club with a goal on his debut against Notts County in front of his adoring supporters.

Just 24 hours later there were two more players through the door as Jordan Williams and James Wilson arrived from Rochdale and Sheffield United. Williams has impressed with his pace and workrate, whilst defender Wilson scored the vital equaliser with his first touch away at Barnet.

Then on deadline day, City brought in three more players. Attacker Pett arrived from Stevenage, Wharton came in from Blackburn Rovers and the last one of a busy day was goalkeeper Allsop, who signed from Premier League side AFC Bournemouth.





# LCFC PLATINUM PARTNERS



AEROFAB

Lincoln Towbar  
& Mobility Centre



Soper of Lincoln  
The home of BMW in Lincolnshire



01522 690000  
www.soperbmw.co.uk



JAMES  
HARBRIDGE

BBC RADIO  
LINCOLNSHIRE



andenor.com

REALBEE  
recruitment ltd



UNIVERSITY OF  
LINCOLN



I would like to say a huge thank you to the club's official Platinum Partners. Without their fantastic support, our pre-season trip to Portugal would not have been possible.

Danny Cowley





Founded: 1879 | Ground: The Energy Check County Ground | Capacity: 15,728

# SWINDON TOWN

Current position: Points:

**7<sup>th</sup>**

**50**

League form (last five games):



## ROBINS RELIANT ON FLITCROFT FIRE

**C**onjuring imagery that C.S Lewis or Tolkien would be proud of in “balancing wizards and warriors”, Swindon manager David Flitcroft is convinced navigating such a tactical tightrope is the route to promotion.

The Robins strengthened during the January transfer window to boost their promotion credentials, having edged into League Two's play-off places in mid-week after a narrow success at Stevenage.

Goal connoisseur Marc Richards (Northampton), creative spark Ollie Banks (Oldham) and forward Keshi Anderson (Crystal Palace) all checked into SN1 to bolster the offensive options, while loanees Rollin Menayese (Bristol Rovers) and Stuart Moore (Barrow) were acquired as defensive cover.

Flitcroft believes finding the right balancing act is the catalyst behind Town's charge for automatic promotion, now just a point behind third place after winning six of their last eight games.

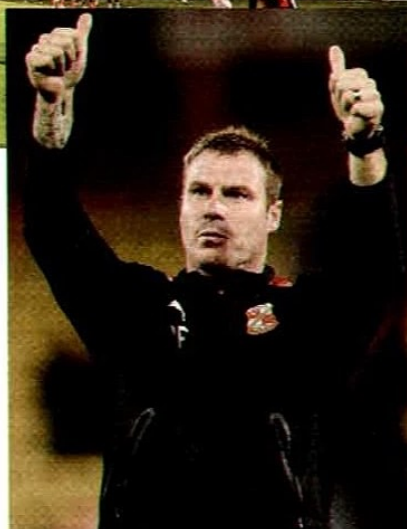
“If you have too many wizards in a team then you are not going to do the other side of the game that is vitally important, and if you have too many warriors you are not going to keep the ball,” Flitcroft explained to the Swindon Advertiser. “You are always trying to strike that 50-50 balance between wizards and warriors and it is about making sure you get that balance right.”

The former Bury boss certainly seems adept at such managerial trapeze work, with his revamped 3-5-2 system seeing the Robins boast the best away record in the division with 10 victories.

Town have a plethora of attacking midfield options at their disposal, with Banks, Anderson, Timi Max Elsnik and Amine Linganzi providing forward thrust and guile, while James Dunne offers more steel. Up top veterans Matthew Taylor and Richards provide the necessary know-how, while Paul Mullin, Luke Norris and Kaiyene Woolery offer ceaseless endeavour and 23 goals between them this season.

Despite some defensive deficiencies that have seen Town concede more than anyone else in the table's top half, barring Wycombe, all the elements for a successful promotion assault seem in place.

Recently Flitcroft praised his team's dressing room characters, clinical displays in front of goal and squad depth, and he was also keen to pinpoint his side's “experienced spine” as integral if they are to make an immediate return to League One, insisting: “I think we've got a good mix, the spine of the team is pretty experienced, with a lot of energy thrown in and the young lads are very hungry to be successful and get that first promotion on their CVs.”



## MANAGING TO SUCCEED: DAVID FLITCROFT

“I needed to find someone well-versed in getting promotion and David obviously got Bury out of this league. His teams are always fit, experienced and dogged, and his knowledge was second to none,” was Swindon chairman Lee Power's rationale upon opting for Flitcroft after last season's demotion.

The former Bolton-born midfielder was something of a fire-fighter in his first two managerial roles. After being assistant manager at Barnsley, he took over from Keith Hill in December 2012 and guided the club to Championship safety, before picking up the pieces at Bury 12 months later.

Leading them to a top-half finish in League Two, the purposeful disciplinarian then steered them to promotion the following term before being released in November 2016.

However, after taking over from Luke Williams at the County Ground last summer, the 44-year-old has vowed to “put Swindon back on the map” and has them ably-placed to mount a promotion charge.





## FAN'S EYE

Even though it's only three weeks ago, it seems like an age away since we played at home on a Saturday afternoon, even to an oxygen thieving old fogey like me.

Because I've not got a lot to moan about, which is unusual for a fan of Lincoln City, I'll try and think of something.

I'm really not used to all this success at the Bank. For a start, it takes me ages to park. So long in fact, that my usual place where I could roll up at ten to three for the last 40 years or so, is, quite often FULL. Yes, that's FULL. Who'd have thought it? The space that I've collared, and made my own which my dad and his dad before him down the ages used as well is no more.

I've never known it, and only once I think, can I remember it getting a little tight when my dad told me that he and his brother had to "lift" their Morris Minor into the space to squeeze it in once and that was in the days when 15 or 16,000 regularly visited the Bank in the fifties. But then hardly anyone had a car in those days.

I've had to resort to completely altering my Saturday ritual, which has included coming in from the sticks on the train, and only then if I can raise the dead (my daughter) early enough to catch one.

It does have its compensations though:

You can drink large amounts of beer in the time waiting between arriving and the game starting.

You never feel cold with all those fans around you, even during the coldest weather. Gone are the days of needing a tartan rug and flask at Sincil Bank, even in the Selenity!

Isn't it just so great to see? A full Coop, nothing better. Feeling like a king surveying all that he sees around him.

Enjoy today, whatever the result.

**Jonathan Battersby**

# H2H

OVERALL RECORD:



▲ IMPS WINS ▲



▲ IMPS DRAWS ▲



▲ IMPS LOSSES ▲

## WE'VE GOT HISTORY

25th March 2007 | Att: 5,741

### LINCOLN CITY SWINDON TOWN

2  
3

Whilst a great game to watch, Lincoln found themselves on the wrong side of a five goal thriller at a frustrated Sincil Bank late in the season during the faltering push for a fifth play-off place in a row.

It had all been so different at Swindon just five months earlier, when Jamie Forrester scored the solitary goal just after the hour in this top of the table clash to send City top of League 2, and their 1,000 plus travelling fans, into delirium at the thought of being at the summit of the league for the first time in a decade.

No such luck this time, and despite a double from much travelled striker Mark Stallard, the Imps had conceded three quick goals after leading early on and left themselves too much to do. It was getting a typical City performance late season, and after being in the top three for the majority of the campaign, playing some of the best football seen at Sincil Bank for many a year under John Schofield, City were staggering, as opposed to swaggering over the play-off line, with automatic promotion a fast fading memory.

Indeed they would hit the play-offs in bad form, eventually losing to Bristol Rovers over two legs in the semi-finals, but City, as the late great Keith Alexander quipped later on, had, in his opinion, been "found out" and the next season was to prove Schofield's downfall early on, something the club and us Imps are only just recovering from, over a decade later.

**Jonathan  
Battersby**

Mark Stallard scored two goals against Swindon back in 2007







# WHO ARE YA?...



**02 BEN PURKISS**  
**RIGHT-BACK | DOB: 01.04.1984**

Former Port Vale captain who has 31 appearances since last summer's switch, the vastly experienced full-back was elected PFA chairman in November.



**03 CHRIS HUSSEY**  
**LEFT-BACK | DOB: 02.01.1989**

Missing since September after hernia surgery but close to a comeback, the former promotion winner with Bury is on a season-long loan from Sheffield United.



**04 MATT PRESTON**  
**CENTRE-BACK | DOB: 16.03.1995**

Archetypal no-nonsense type cast from the same mould as Swindon legend Shaun Taylor, the former Walsall man has chipped in with three goals this season



**05 CHRIS ROBERTSON**  
**CENTRE-BACK | DOB: 11.10.1985**

After promotion with Torquay, League One stints at Preston and Port Vale and a SPL spell with Ross County on a packed portfolio he became Flitcroft's first signing.



**06 OLLIE LANCASHIRE**  
**CENTRE-BACK | DOB: 13.12.1988**

A former promotion winner with Rochdale, Town's only league ever-present this season provides the blueprint for any commanding captain in leading by example.



**07 PAUL MULLIN**  
**LEFT WINGER | DOB: 06.11.1994**

Effervescent wideman who has flourished in his maiden campaign in Wiltshire, following three years at Morecambe, scoring seven times by early November.



**08 JAMES DUNNE**  
**CENTRE MIDFIELD | DOB: 18.09.1989**

Providing the steel and graft through the middle, the combative Exeter, Portsmouth and Cambridge man reached the 300th League game landmark in January.



**09 LUKE NORRIS**  
**STRIKER | DOB: 03.06.1993**

Precision finisher in the most productive form of his career in leading the Robins' scoring charts with 12, already double his tally from last season at Gillingham.



**14 ELLIS IANDOLO**  
**LEFT WINGER | DOB: 22.08.1997**

Lauded by Flitcroft as "very diverse", the versatile youngster opened his scoring account in league football with a 35-yard free-kick against Barnet on New Year's Day.



**16 AMINE LINGANZI**  
**CENTRE MIDFIELD | DOB: 16.11.1989**

Briefly a Premier League footballer with Blackburn, then served Gillingham and Portsmouth, the Congo international has been missing since New Year's Day because of a quad tear.



# THINK FAST ACT FASTER

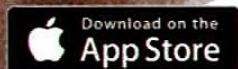


## BET IN-PLAY FASTER WITH SKY BET

- NEW** LIVE MATCH IOS APP NOTIFICATIONS
- NEW** FASTEST EVER IOS APP LOADING
- NEW** IN-PLAY SCORE CENTRE

NEW & EXISTING CUSTOMERS

DOWNLOAD THE APP NOW



**sky bet**  
BETTING, BETTER

WHEN THE **FUN** STOPS **STOP**

[gambleaware.co.uk](http://gambleaware.co.uk)

18+

18+ only. T&Cs apply. Visit [skybet.com](http://skybet.com) for more information.





**19 TIMI MAX ELSNIK**  
**ATTACKING MIDFIELD | DOB: 29.04.1998**

The all-action dynamo marked his return from a two-month lay-off with a brace against Crewe last weekend, the Slovenian Under-19 cap is on a season-long loan from Derby.



**20 KELLAN GORDON**  
**STRIKER | DOB: 25.12.1997**

Another borrowed from the Rams' well of youth, the precocious talent has relished his maiden campaign in senior football, scoring four times in 25 appearances.



**21 REICE CHARLES-COOK**  
**GOALKEEPER | DOB: 08.04.1994**

Reliable former Arsenal trainee on Coventry's books until 2017, Flitcroft turned to him as No.1 in October and he's not disappointed with six clean-sheets.



**22 KAIYNE WOOLERY**  
**STRIKER | DOB: 11.01.1995**

Exhilarating winger boasting outstanding potential, he became Swindon's marquee acquisition last summer from Wigan, after helping Forest Green gain EFL status.



**24 KYLE KNOYLE**  
**RIGHT WING-BACK | DOB: 24.09.1996**

Industrious former England Under-18 international who learned his trade in West Ham's Academy, then had loans at Dundee United and Wigan.



**28 STUART MOORE**  
**GOALKEEPER | DOB: 08.09.1994**

Brought in last month from Barrow to rival Charles-Cook, the former Reading trainee had temporary spells with Peterborough and Luton in recent campaigns.



**29 OLIVER BANKS**  
**ATTACKING MIDFIELD | DOB: 21.09.1992**

The conduit behind much of Town's forward play, the elegant Oldham loanee oozes class and has two goals in four appearances since heading to SN1.



**30 KESHI ANDERSON**  
**STRIKER | DOB: 06.04.1995**

"What I love about Keshi is he is not one dimensional" Flitcroft lauded after a loan deal from Crystal Palace was made permanent in January for the four-goal frontman.



**31 MATTHEW TAYLOR**  
**LEFT MIDFIELD | DOB: 27.11.1981**

A Premier League regular for Portsmouth, Bolton, West Ham and Burnley, the seasoned midfield schemer is approaching 700 career appearances and tops Town's assists chart.



**32 ROLLIN MENAYESE**  
**CENTRE-BACK | DOB: 04.12.1997**

Towering 6ft 3ins centre-back borrowed from Bristol Rovers until the summer, the former Wales Under-17 captain started out with Cardiff.

17

# OPPOSITION STAR MAN

**MARC RICHARDS | STRIKER | 08.07.1982**

With a track record of three League Two promotions and 187 goals from more than 600 games, securing the pedigree marksman from Northampton in January was a major coup for the Robins.

The 35-year-old, who served Barnsley, Port Vale and Chesterfield with distinction, showed he'd lost nothing with age last weekend with a brace against Crewe.

The start to life in Wiltshire that manager Flitcroft had hoped for, saying: "The guy is pristine and the reason why he is still playing at that level is the fact that he keeps himself in absolute pristine knick."



**PLACE OF BIRTH: WOLVERHAMPTON | HEIGHT: 1.80M**  
**APPEARANCES: 27 | MINUTES PLAYED: 1,287 | GOALS: 3 | ASSISTS: 1**

**2017-18**  
**VITAL STATS**



# gere

Gere Menswear Proud sponsors of LCFC

278 High St,  
Lincoln, LN2 1JG  
01522 514 794



Geremenswear



@gerelincn



**Taylor  
Pearson  
Construction**

A regionally operating contractor with a wealth of experience in both the  
public and private sectors.



01526 352637

info@taylorpearson.co.uk  
www.taylorpearson.com





I started working full-time for Lincoln City Football Club in February 2013 as Bar & Catering/Venue Manager, but my working relationship with the club started in 2005 as a barman in the Trust Suite (now the Travis Perkins Lounge)...

**In my time away from the club I have had the opportunity to work in some fantastic places all around the world including America and Scotland.**

In recent months I have had the opportunity to take on a new role as Business Operations Manager, a position I wouldn't be able to achieve without all the fantastic staff I work with on a daily basis.

My current role is wide reaching, I work closely with all other departments at the club to ensure we continue to improve and build on the great work already achieved.

I work closely with the first-team and in particular the Sports Science and Medicine department. Together we make sure the players are looked after and that their ever changing needs are met. With guidance and help from Head of Sports Science Luke Jelly I have been able to implement a first-team breakfast and lunch menu that is designed to provide players with key nutritional values. We deliver this four to five times a week along with provisions for video analysis at the ground.

I also help with the player's wellbeing and assist with matters away from the playing side of football.

Away from the pro department my excellent team and I look after all functions bookings. This is a wide and varied

role and incorporates birthday parties, corporate bookings, wedding receptions, christenings and everything else inbetween. We are a seven-day a week operation and are involved with every function from start to finish.

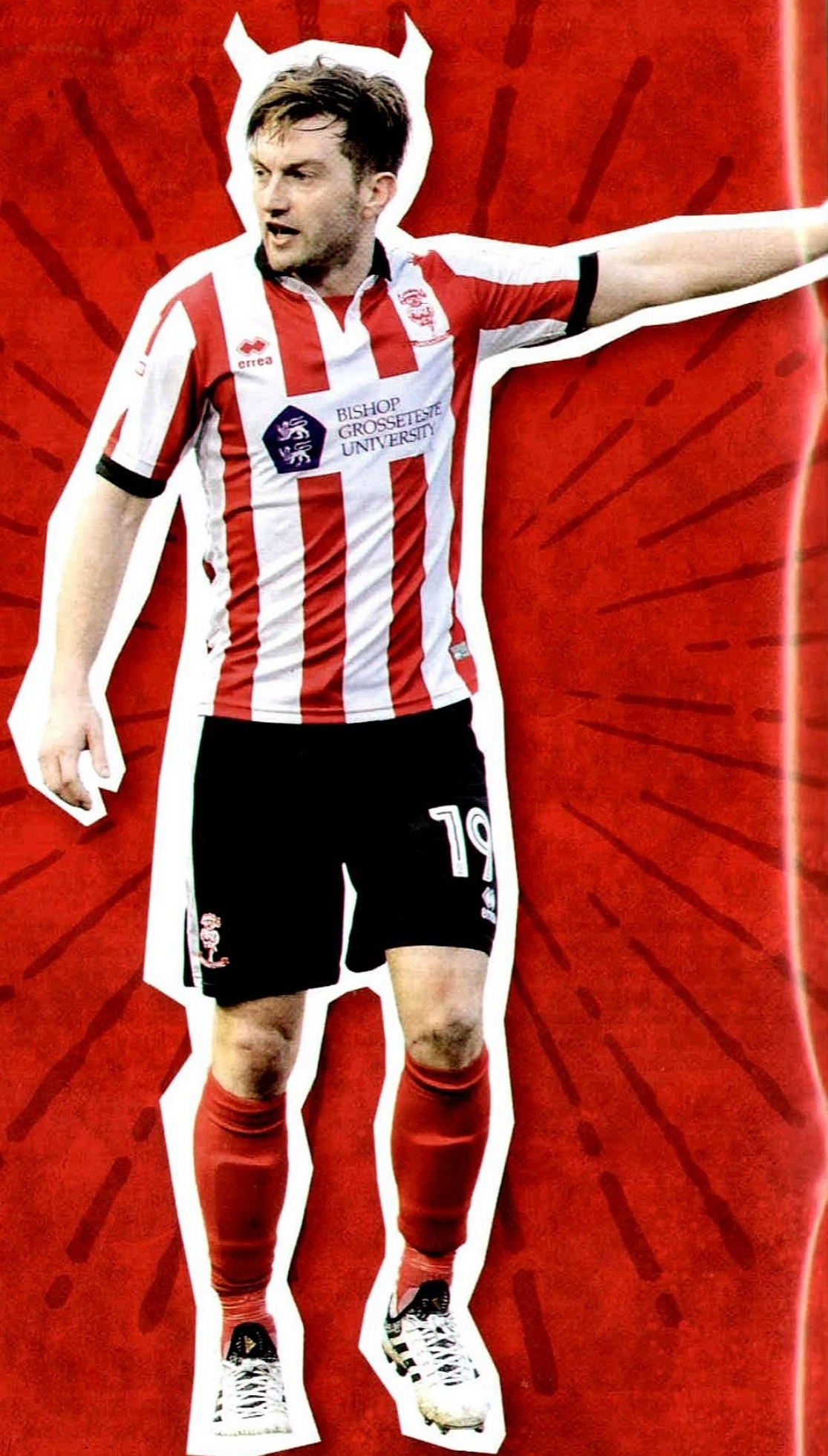
Match day is always my favourite part of the week and most definitely the busiest. I oversee a 30 strong match day team who are tasked with delivering an experience all fans hopefully enjoy! We are the face of the club on a match day and I take immense pride in being able to affect our customers experience beyond the 90 minutes of football.

I, of course, don't do this on my own I am lucky to have a fantastic team of key staff who always go above and beyond for me and the football club.

If I was to pick a favourite moment from my time at the club it would have to come from last year's history making season. Lee Angol's goal against FGR summed up his ability to learn from others and that hard work always pays off. I also enjoyed our FA Cup Second Round tie against Oldham. Games under floodlights are always special at Sincil Bank but this one will always stand out as a key moment and high drama with the fog coming in at the end of the game.

I hope this has given a small insight into my working world at Lincoln City Football Club.









# LEE FRECKKLINGTON

**Lee Frecklington** isn't just a League One captain dropping down to League Two, and he isn't just a former player coming back to his old club, writes **Gary Hutchinson...**

**L**ee is one of the best products of The Imps' youth system in living memory, joining as an 11-year-old and remaining at the club for over a decade. He broke through under Keith Alexander, flourished under John Schofield and went on to play Championship football.

At just 32, the move back to Sincil Bank earlier this month did catch him by surprise a little.

"I didn't intend on leaving Rotherham, but the circumstances change very quickly in football. The offer came in, the club accepted it and that left me in a position that I was leaving," he explains.

"Much was still resting on where to go, but once I knew I was leaving there was only one team I wanted to join. Lincoln was the place I always wanted to finish my career, whether I was expecting it so soon or not is a different question, but I'm delighted to be here at a time when the club is doing so well."

Lincoln weren't the only suitors of Frecklington's services, Mansfield Town also coveted him. However, he clarifies there was only ever going to be one place he wanted to play his football.

"It all happened very quickly, but Mansfield did come in and I did speak to them. When the decision came down to it, if you're asking me do I want to play for Lincoln or do I want to play for Mansfield, there is only ever going to be one winner. For me, that was a pretty easy choice to make in the end," he said.

Frecklington's did enjoy a great period of his career under The Stag's manager Steve Evans at Rotherham though, and cites the Scot's steely determination to win as one of the reasons he's enjoyed such a long and successful career.

“ ”

**...if you're asking me do I want to play for Lincoln or do I want to play for Mansfield, there is only ever going to be one winner...**

"Steve is a born winner, his passion and his desire to win is up there with the best of them, maybe more than anybody I've ever worked for," he states. "He drags the best out of players, maybe not in the most orthodox manner, but with his general desire to win matches you can't help but play your best for him. What he did (at Rotherham) with that group of players was a great achievement."

Whilst at Rotherham, Frecklington tasted Wembley success in the play-off finals, unfortunately sparking the scene of Steve skipping along the Wembley touchline in full view of the many viewers across the world. Joking aside though, Frecklington points to that as a crowning achievement in his career.





*Hits and  
memories*

FM | ONLINE | MOBILE

Elton  
John

Bon  
Jovi

Katy  
Perry

Duran  
Duran



Queen

Calvin  
Harris

Pink

Ed  
Sheeran

David  
Bowie

Bruno  
Mars

Take  
That



Little  
Mix



— FUNDING PARTNERS —

Since 2000, the Football Foundation has been transforming grassroots facilities across the country thanks to the generous investment provided by the Premier League, The FA and the Government via Sport England.

The total area of every all-weather pitch the Football Foundation has funded is equivalent to **NEW YORK'S CENTRAL PARK!**

**39,160**

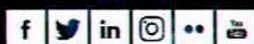


If every changing room the Football Foundation ever funded was combined, **39,160** players would be able to change simultaneously!

If every all-weather and natural grass pitch the Football Foundation funded was laid back-to-back, it would stretch from London's **BIG BEN** TO **CALAIS!**



**Football  
Foundation**



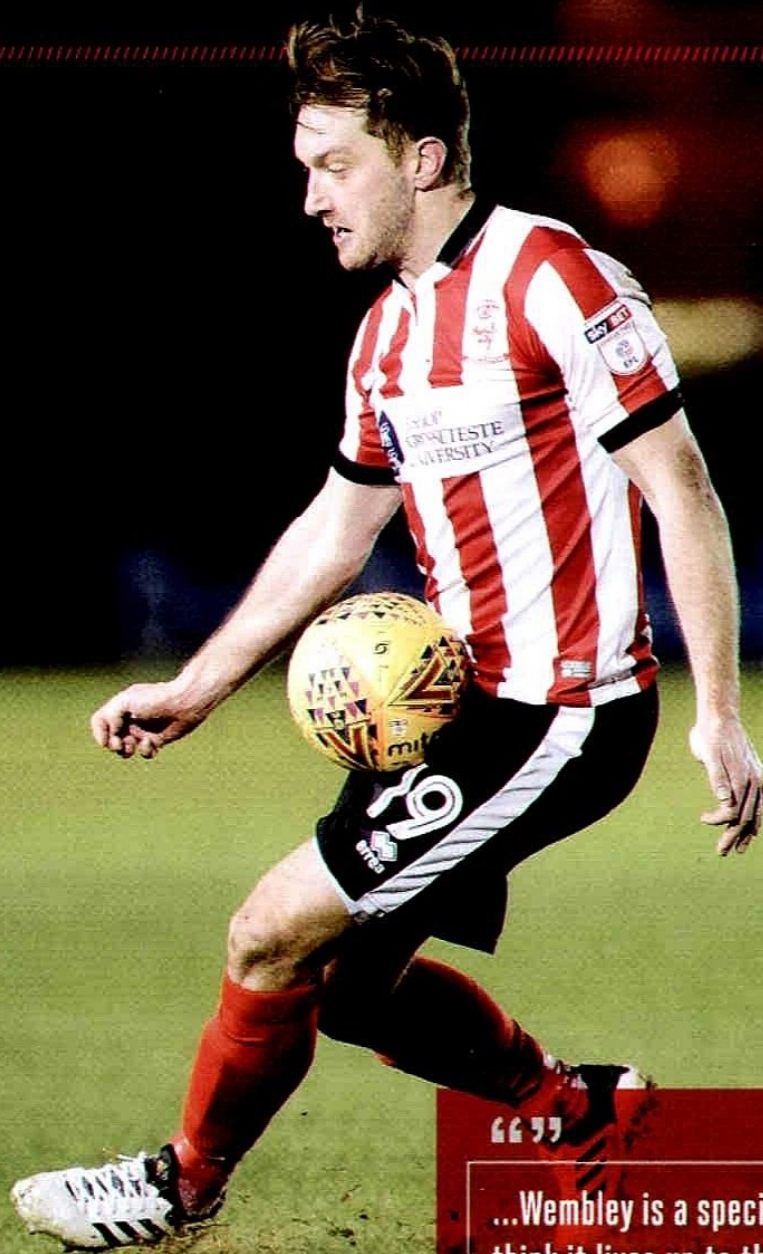
[www.footballfoundation.org.uk](http://www.footballfoundation.org.uk)

Charity No: 1079309 Company No: 3876305

**x351**

If every goalpost the Football Foundation funded were stacked on top of each other, it would create a structure equivalent to the height of **351 WEMBLEY STADIUMS!**





“”

...Wembley is a special place, I think it lives up to the expectations once you step out on to that pitch for the first time, you think 'wow, this is something special'...

“Wembley is a special place, I think it lives up to the expectations once you step out on to that pitch for the first time, you think ‘wow, this is something special’. For us to get there was great, we were all looking forward to it, but then to win, that was something else. I don’t think there is a better place to win a football match.

“I’ll always remember the celebrations on the pitch and the amount of fans Rotherham had taken. It’s the best atmosphere I’ve played in. It’s something I would love to do now, I’d love for Lincoln to get there and to be able to take my hometown club to Wembley for the first time.”

One thing Frecklington doesn’t like to recall about that day was his missed penalty in the shoot-out.

“Yeah, thanks for bringing that up!” he joked. “I missed my penalty on the day, the only one I’ve ever missed! I always feel confident when stepping up to take a penalty but on that day, for some reason I missed. Luckily our ‘keeper pulled off a couple of great saves and we won the game. Hopefully, nobody remembers who misses the penalties when you win.”

Frecklington has played under many other influential managers, all who added to his game or taught him more about himself. When asked who the biggest influence on his career has been since leaving Lincoln, his list is impressive.

“Darren Ferguson has to be one of the most influential I worked with,” he recalls. “He was the one that took me from Lincoln in the first place and I thoroughly enjoyed working for him. He’s a fantastic manager, he had a totally different style of football to anything I’d played before and he taught me a lot of things. I will always be grateful to him for giving me that opportunity, it was under him we got promoted out of League One straight away and under him I first played Championship football.”

He also cites Evans, his last manager Paul Warne and a wily old campaigner as big influences.

&gt;&gt;&gt;





# Full Time



Proud partner of







"We had enormous success under Steve Evans, what we achieved under him was an amazing achievement," he reflects. "To get back-to-back promotions and stay in the Championship all in the space of three years. I never expected that when I joined them in League Two."

"Neil Warnock was also very special, although I only worked with him for a short spell. I would probably have to say he was the best manager I have worked under, there's something about him and the way he got us out of that situation there. We were eight points adrift with 16 games to go, but he arrived and we went on an unbelievable run to avoid relegation. I'd also have to mention Paul Warne, he was unbelievable for me personally, both on and off the pitch, and his help with this move was class."

The move itself, whilst coming as a shock, did seem a natural fit for Frecklington. Not only is he a Lincoln lad, born and bred, but both his dad and uncle were names on the local football scene. Uncle Dave is now manager at Gainsborough Trinity, whilst his dad, Craig, played against Aston Villa whilst at Nettleham.

"There's a lot to be said for home, it's a big word. Home is where the family is," he added. "I've grown up in Lincoln, my family still live in Lincoln, my partner's family are from Lincoln, even my kids are now at school in Lincoln. I think it was just a perfect fit. It happened very suddenly, but the opportunity to come back home arose and I'm really pleased it's all sorted now."

The opulent surroundings of the Championship must have felt a million miles away a fortnight ago as City struggled to a 1-1 draw in dire conditions at Underhill. As a

professional, Frecklington understands he'll need to adapt but he's ready to do so to push City forward.

“ ”

...There's a lot to be said for home, it's a big word. Home is where the family is. I've grown up in Lincoln, my family still live in Lincoln, my partner's family are from Lincoln, even my kids are now at school in Lincoln...

"Barnet was very different to what I'm used to and I won't lie, it will take some adjusting. It's a different style of football in different stadiums against different opposition and it's something that I am going to have to get used to," he said. "I'm a footballer though and it doesn't matter where I have played before, I'm a Lincoln City player now. I will do my best for this club and I'll work hard on a day-to-day basis to achieve that."

For now, Frecklington's arrival still feels like something of a coup, however, he isn't just a new face or even an old face coming back. He's one of our own, a slice of Lincoln City history that we've recaptured before the best of his years have passed. He's focused and determined to ensure his career ends on a high, be it in League One or at Wembley with Lincoln.





# #MYIMPS



Lincoln City

To be in with a chance of being featured in the programme, send us pictures of yourself, your family and more via #MyImps or drop us an email to [MyImps@lincolncityfc.co.uk](mailto:MyImps@lincolncityfc.co.uk)...



▲ Heather - My friend Angie completes her 92 clubs next week at Lincoln, she is a lifelong Swindon fan



▲ Jamie - Picture taken in Enniskillen, Northern Ireland where I now live, moved here from Lincoln 11 years ago



▲ Becki Hodder - Emily Isherwood is five-years-old and attends every home game



▲ Julian Soons - Here is Poacher, Jacob and Melanie Soons



▲ Rachel Bourne - The start of our family holiday to Alicante, my son and daughter on the plane



▲ Gemma Brooking - Luna age two at her first match and Ellie on her eighth birthday, proud as punch with Farman on her back!!





Co-op Stand

▲ Leigh Holman - This picture is of my three daughters and my grandson, taken on Boxing Day 2017



▲ Sam Coulson - Finley aged five, the biggest, littlest Lincoln fan. He goes to every home match and has a season ticket



▲ Simon Jenkinson - Me and Gemma Jenkinson on a recent holiday in Crete #UTI



▲ Do you know which grounds these were taken at, or any of the people in the pics? If so drop an email to [myimps@lincolncityfc.co.uk](mailto:myimps@lincolncityfc.co.uk)

## TODAY'S MASCOTS:

**Max Corrigan | Age: 7**

Favourite Players: Harry Anderson and Matt Rhead  
Prediction: 2-1



**William Rooke | Age: 9**

Favourite Players: Harry Anderson and Matt Rhead  
Prediction: 2-0



**Joseph Rooke | Age: 7**

Favourite Players: Matt Green and Josh Vickers  
Prediction: 1-0



**Finley Robson | Age: 8**

Favourite Players: Josh Vickers and Sam Habergham  
Prediction: 2-0



**Shannon Dixon | Age: 11**

Favourite Players: Paul Farman and Billy Knott  
Prediction: 1-0



**Jack Hackney | Age: 7**

Favourite Players: Matt Rhead and Paul Farman  
Prediction: 2-0



**Kye Hutchinson | Age: 7**

Favourite Players: Paul Farman and Nathan Arnold  
Prediction: 2-1



**Corey Hutchinson | Age: 8**

Favourite Players: Matt Rhead and Sam Habergham  
Prediction: 1-0



**PJ Seal | Age: 6**

Favourite Players: Matt Rhead and Nathan Arnold



**Mackenzie Hatton | Age: 11**

Favourite Players: Luke Waterfall and Harry Anderson





## Customised Workwear Rental Specialists For Overall Service

t: **01522 887788** f: 01522 888877  
e: [sales@jacksons-workwear.co.uk](mailto:sales@jacksons-workwear.co.uk)  
w: [www.workwear.uk.com](http://www.workwear.uk.com)



Jacksons Workwear Rental - A family owned and run business for over 200 years (Established in 1791).

# nicholsons

chartered accountants & business advisers

**We support the Imps because,  
like them, our goal is to be the best.**

Our accountancy, business advice and tax professionals bring specialist expertise to help your business develop and grow. When you run a business, you want the best possible advisers, you want people who understand your business and you want people who are as committed as you are to making your business a success. You'll find all this and more at Nicholsons and we'll help you to achieve your goals.

**For more information, please call  
us on 01522 815100**

**We'll help  
you achieve  
your goals!**



[www.nicholsonsca.co.uk](http://www.nicholsonsca.co.uk)







Following the closure of the January transfer window, we sat down with Mike Hine to find out what a player's medical consists of and the research the back room staff put in to a player's medical history...

## PRIOR TO THE MEDICAL

"Once we know the player is going to be coming in for his medical, we will start reading around any injury issues he has had and go into more detail on the topic so we know where to focus our medical," Hine said.

"Not every medical will be the same, we will have the same tick boxes to go through, but once we have a bit more detail we can specify what we want to check with the player.

"When the player is in the building we get the subjective views of the player to find out a little bit about their perspective of their injury history and their ongoing issues. Again, it's just building a picture of their past, present and future with their conditioning work. We find out what they've had and how we can improve essentially.

"It's not about passing or failing a medical, a lot of it is to do with what we can do to improve them and keep them on the pitch."

## PLAYERS WITH INJURY HISTORY

"In a scenario where a player comes in and has a significant injury history, one of the things that you have to weigh up to the management team is the risk that it brings. Risk is in terms of how much playing availability will the player have?" Hine added.

"Neal Eardley is a fantastic example of bringing a player in, listening to what they've got to say, understanding their medical history, and applying a regime to them which you hope will work. Neal has bought into what we've done, he's not alone though.

"We have brought players in with injury histories. Players have made the step down from higher levels, where injuries have affected their careers a little bit, and part of us as a

department is we like to think we can bring them back into top physical condition and back where they belong."

## THE MEDICAL ITSELF

"Once we've been past the initial subjective stage, we will look at their posture, abnormalities in that respect, and anything that will look like he's loading extra in a certain way or stiff in a certain area in the way they move," Hine said.

"We film the players doing functional activities, so overhead squatting, and performing more dynamic movements too. They provide more of an understanding to how the players work certain areas of their body.

"We take their body fat percentages, we have a certain percentage we like to keep the players under. Aside from that, we do some cardiac testing."

## HOW DO MEDICALS COMPARE AT LINCOLN CITY TO CHAMPIONSHIP AND PREMIER LEAGUE CLUBS?

"We are providing the necessary detail here to relay to the management team. Firstly, whether the player is of risk and how we can provide their conditioning programmes," Hine continued.

"A player's medical will usually last two to three hours. If we had more facilities and equipment, we'd do more testing. I know there's clubs that will probably do more than us, but I doubt there's many at this level that do so, but certainly in the Championship and Premier League they will due to the finance behind transfers.

"We do value our department, and we feel what we put on is adequate for Lincoln City."



# Stagecoach... Your lift to the match!



## Plan your journey

buses all over the City  
all day



## Track your bus

get live bus times

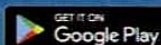


## Mobile tickets

buy dayrider and megarider  
on your phone



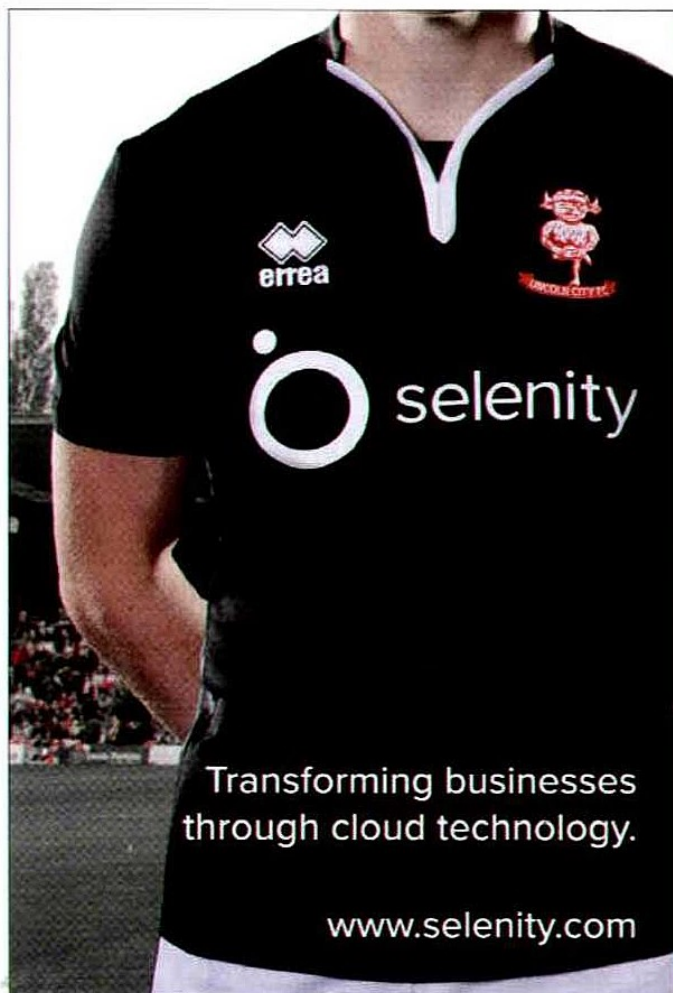
Download the  
Stagecoach Bus App



Search Stagecoach Bus

*Season ticket holder? Get a free ride to Lincoln City matches!  
Show your season ticket to the driver on match day to get free travel.  
Valid Saturday match days from 10am, evening matches from 6pm.  
Only valid in Lincoln megarider plus area.*

stagecoachbus.com  
@StagecoachEMid



Transforming businesses  
through cloud technology.

www.selenity.com

## FOOTBALL TO AMSTERDAM

1-3 June 2018

400 fans, 3 days, 2 countries, 1 aim.  
Help stop prostate cancer being a killer.  
[prostatecanceruk.org/amsterdam](http://prostatecanceruk.org/amsterdam)



PROSTATE  
CANCER UK

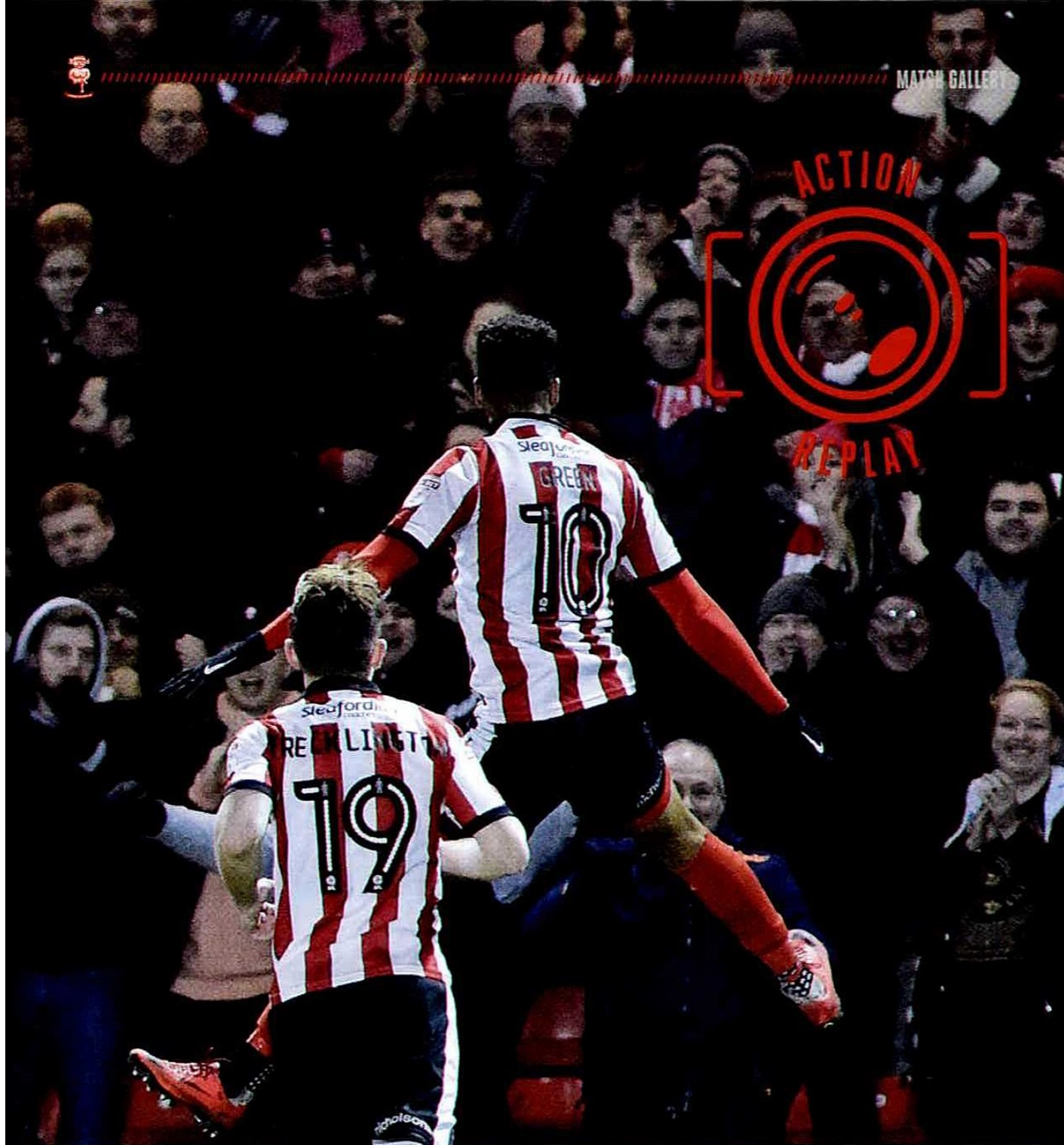


LMA  
LEAGUE MANAGERS  
ASSOCIATION



PROSTATECANCERUK is a registered charity in England and Wales (1089287) and in Scotland (SC039332). Registered company number 02773367.





BE YOUR OWN

Join Better Gym Lincoln

A fantastic attacking display saw Lincoln City overcome play-off rivals Newport County at Sincil Bank, after providing drama in a scintillating 4-2 victory against Peterborough in the Checktrade Trophy quarter-finals...





# LINCOLN TOO STRONG FOR NEWPORT

LINCOLN  
CITY



3-1



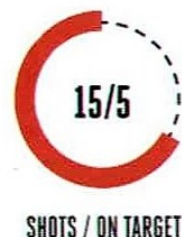
NEWPORT  
COUNTY

Sincil Bank

sky BET LEAGUE TWO EFL

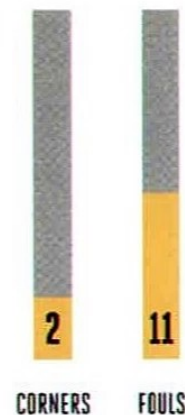
7,567 (76 Notts supporters)

TUESDAY 30TH JANUARY

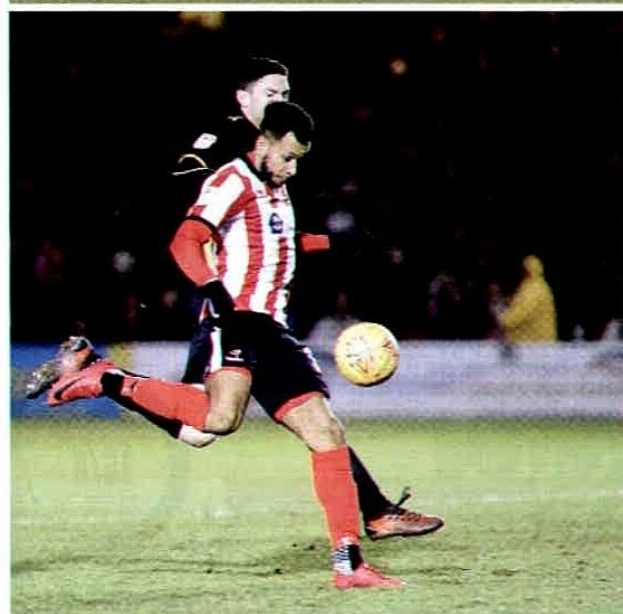


FULL-TIME	
O Palmer Foul	90'+6
80'	In: J Sheehan Out: M Demetriou
80'	In: P Hayes Out: P Amond
In: J Williams Out: D Rowe	79'
O Palmer Assist: H Anderson (3-1)	73'
In: O Palmer Out: M Green	72'
67'	In: S McCoulsky Out: F Nouble
In: J Wilson Out: M Rhead	61'
M Green Assist: M Rhead (2-1)	51'

HALF-TIME 1-1	
40'	S Bennet Foul
32'	(1-1) P Amond
B Eardley Foul	25'
M Rhead Assist: M Green (1-0)	13'
12'	T B White Foul











# LATE GOALS SEE IMPS CLOSE IN ON WEMBLEY

**LINCOLN  
CITY**



**4-2**



**PETERBOROUGH  
UNITED**

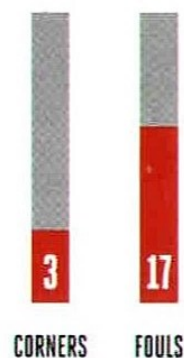
Sincil Bank

Cheekatrade  
TROPHY



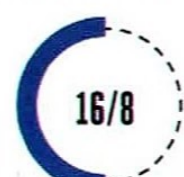
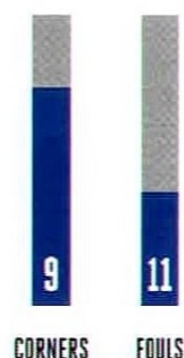
3,161 (1,028 Posh supporters)

TUESDAY 23RD JANUARY



SHOTS / ON TARGET

FULL-TIME		
M Green (4-2)	90'+5	
H Anderson (3-2)	90'+3	
	70'	↔ In: L Da Silva Lopez Out: J Ward
	69'	↔ In: I Kanu Out: J Morias
In: C Stewart Out: D Rowe	69'	
In: O Palmer Out: M Rhead	65'	
In: S Long Out: L Frecklington	64'	
M Rhead (2-2)	55'	
	50'	⚽ (1-2) D Lloyd
HALF-TIME 1-0		
D Rowe (1-1)	45'	
	14'	⚽ OG (0-1) N Eardley



SHOTS / ON TARGET




NOTHING  
SHOULD GET  
IN THE WAY  
OF YOUR  
ENJOYMENT  
OF SPORT

ESPECIALLY  
BETTING

BETTING SHOULD ONLY ENHANCE  
THE EXCITEMENT, THAT'S WHY WE  
MEAN IT WHEN WE SAY

WHEN THE **FUN** STOPS 

BeGambleAware.org 

Search #3SIMPLETOOLS to find out more



BETTING, BETTER



**Wickes**

TradePro

# Pick from a quality line up

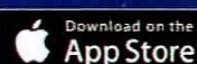


Isn't it time you  
joined the team?

Always cheaper on quality trade  
brands with Wickes TradePro.

\*Wickes TradePro members get 10% off purchases in-store and online. The Wickes TradePro discount does not apply to purchases of Showroom Kitchens and Bathrooms, Gift Vouchers, or Delivery charges. For full terms & conditions please visit [www.wickes.co.uk/trade/terms-conditions](http://www.wickes.co.uk/trade/terms-conditions).

**In the trade? It's cheaper with Wickes TradePro.  
To sign up, download the App.**







# LINCOLN CITY FC PLAYER SPONSORS 2017-18

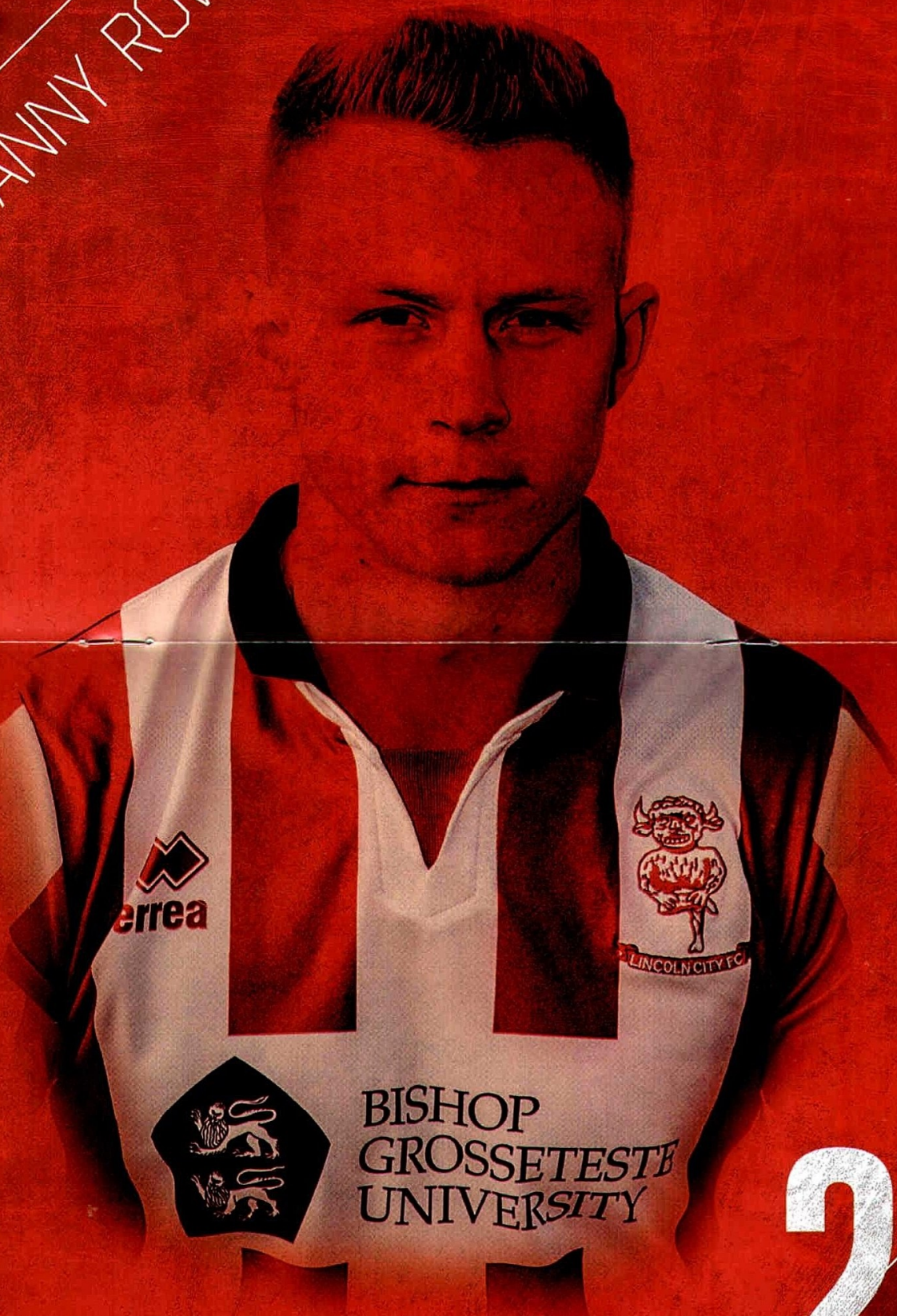
For more information please email the commercial department at [commercial@lincolncityfc.co.uk](mailto:commercial@lincolncityfc.co.uk)

 SPONSORED BY: JAMES HARBRIDGE <b>DANNY COWLEY</b>	 SPONSORED BY: JAMES HARBRIDGE <b>NICKY COWLEY</b>	 SPONSORED BY: JAMES & SONIA HARBRIDGE <b>JAMIE McCOMBE</b>	 SPONSORED BY: CARATECH <b>JIMMY WALKER</b>
 SPONSORED BY: UNIVERSITY OF LINCOLN <b>MIKE HINE</b>	 SPONSORED BY: UNIVERSITY OF LINCOLN <b>LUKE JELLY</b>	 HOME & AWAY: IAN HOBSON <b>PAUL FARMAN</b> 01	 HOME: DAN HILTON AWAY: THE EGGSTRA MILE CAFE <b>SEAN LONG</b> 02
 HOME: DAVE, DALE & ABBIE NASH AWAY: DAN HILTON <b>SAM HABERNHAM</b> 03	 HOME: PRIESTLEY FAMILY AWAY: JULIAN WALL <b>ELLIOT WHITEHOUSE</b> 04	 HOME & AWAY: VITAL LINCOLN CITY <b>LUKE WATERFALL</b> 05	 HOME: IMP PAVE LTD AWAY: PETER TURZANSKI PROPERTIES GFGM CONSTRUCTIONS <b>OLLIE PALMER</b> 08
 HOME: THE MATTADRES AWAY: JOHN & DANIELLE- BASEL IMPS <b>MATT RHEAD</b> 09	 HOME & AWAY: WWW.STACEYWEST. NET <b>MATT GREEN</b> 10	 HOME & AWAY: INFINITY PM SOLUTIONS <b>BILLY KNOTT</b> 11	 HOME & AWAY: HUGH, ALAN, RUBY AND LUCY JOHNSON <b>JORDAN WILLIAMS</b> 14
 HOME: ALAN MISSON AWAY: MR K GRIFFIN <b>JAMES WILSON</b> 15	 HOME & AWAY: COLIN ANDERTON <b>MICHAEL BOSTWICK</b> 16	 HOME & AWAY: RUNNING IMP <b>LEE FRECKLINGTON</b> 19	 HOME: CHEQUERGATE LIMITED AWAY: BEN BRADLEY CROP SERVICES <b>JOSH VICKERS</b> 21
 HOME & AWAY: RED IMPS COMMUNITY TRUST <b>NEAL EARDLEY</b> 23	 HOME & AWAY: FLAMES OF NEWARK <b>DANNY ROWE</b> 24	 HOME: DAN HILTON AWAY: NEAL & JO COOKE - TORQUAY IMPS <b>HARRY ANDERSON</b> 26	 HOME & AWAY: VITAL LINCOLN CITY <b>NATHAN ARNOLD</b> 28
 HOME & AWAY: SOPHIE & TIFFANY HARBRIDGE <b>ALEX WOODYARD</b> 30	 HOME & AWAY: PHOENIX FM UK LTD <b>RICHARD WALTON</b> 31	 HOME & AWAY: AVAILABLE TO SPONSOR <b>CAMERON STEWART</b> 32	 HOME & AWAY: VITAL LINCOLN CITY <b>TOM PETT</b>





DANNY ROWE



24





# LINCOLN CITY FC UNDER-18s PLAYER SPONSORS 2017-18

For further details or to sponsor a scholar please email [youthadmin@lincoln.co.uk](mailto:youthadmin@lincoln.co.uk)



SPONSORED BY:  
ROSS TAYLOR  
CHILL OUT  
REFRIGERATION

**DAMIAN FROGGATT**



SPONSORED BY:  
ANDREW WHITE  
DESIGN LTD

**NICK GREEN**



SPONSORED BY:  
KATY H GROUP

**RICHARD BELCHER**



SPONSORED BY:  
LINCOLNSHIRE  
BREWING COMPANY

**ROSS BROOKS**



SPONSORED BY:  
RED IMPS  
COMMUNITY TRUST

**GLEN HARRIS**



SPONSORED BY:  
RED IMPS  
COMMUNITY TRUST

**MARTYN LAKIN**



SPONSORED BY:  
GUARDIAN HYGIENE  
SERVICES LTD

**STEVE RANDOS**



SPONSORED BY:  
REFLEX GAMING

**DEAN WEST**



SPONSORED BY:  
DOREEN, GEORGE &  
CHRIS ASHTON

**MICHAEL ANTKOWIAK**



SPONSORED BY:  
RED IMPS  
COMMUNITY TRUST

**LEWIS COX**



SPONSORED BY:  
MICHAEL TURCZYN

**JAMES HUGO**



SPONSORED BY:  
EXTRA MSA GROUP

**CHARLIE WEST**



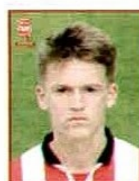
SPONSORED BY:  
PETE ROBINSON

**KUDA BURUTSA**



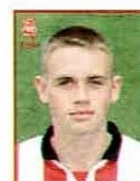
SPONSORED BY:  
THE UPHOLSTERER

**JACK MATHERS**



SPONSORED BY:  
CHRIS TRAVERS

**JOSH BURNS**



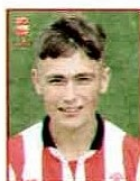
SPONSORED BY:  
THE NEW INN,  
FOLKINGHAM

**KYLE WATKINS**



SPONSORED BY:  
MEDEFIX LIMITED

**RITCHIE BURDETT**



SPONSORED BY:  
CHRIS TRAVERS

**KEILEN GRETTON**



SPONSORED BY:  
JAMES CLARK &  
MAXINE HOWSAM

**DANIEL HORTON**



SPONSORED BY:  
T.C. MINI COACHES  
LTD

**DECLAN O'HARE**



SPONSORED BY:  
RED IMPS BRIGADE

**ELLIS CHAPMAN**



SPONSORED BY:  
KALEIDACAT LTD

**CHARLIE HART**



SPONSORED BY:  
JANET BARRATT

**LUKE WHITE**



SPONSORED BY:  
GARY SHELBOURN  
& SON

**HARRY TROOP**



SPONSORED BY:  
DOREEN, GEORGE &  
CHRIS ASHTON

**JACOB FENTON**



SPONSORED BY:  
RICK O'BOYLE

**JON SMITH**

Sponsorship forms a key part in raising the funds needed for our 150 Academy footballers to receive the maximum amount of high quality coaching and development. Other academy sponsorship opportunities are also available with bespoke packages tailored to suit the sponsor's requirements.





# GET GAME READY



  
**BRING IT ON!**





# Just £349 a month (plus initial rental)\*.

## Capable. The GLC.

The GLC 220 d 4MATIC Sport is brimming with ingredients to enhance its sporty exterior. And our revolutionary 4MATIC all-wheel drive gives maximum traction, even in the toughest terrain.

- 18" alloy wheels in Vanadium silver
- LED High Performance headlights
- Garmin® MAP PILOT navigation system
- Active Parking Assist with PARKTRONIC
- Heated seats
- Interior light package
- DYNAMIC SELECT - choice of driving modes
- Black ash wood trim

Call 01522 696016 to book your test drive.

Mercedes-Benz of Lincoln is proud to support Lincoln City Football Club.

### Mercedes-Benz of Lincoln

Kingsley Road, Lincoln Fields, Lincoln LN6 3TA  
[mercedes-benzoflincoln.co.uk](http://mercedes-benzoflincoln.co.uk)

Mercedes-Benz



Official government fuel consumption figures in mpg (litres per 100km) for the GLC range: urban 26.2(10.8)-51.4(5.5), extra urban 40.9(6.9)-60.1(4.7), combined 34.0(8.3)-56.5(5.0). CO<sub>2</sub> emissions 189-129 g/km. Official EU-regulated test data are provided for comparison purposes and actual performance will depend on driving style, road conditions and other non-technical factors.

\*Advance Rental £8,222. Personal Contract Hire offer based on a GLC 220 d 4MATIC Sport with optional metallic paint, 10,000 miles per annum. Excess mileage charges may apply. Orders/credit approvals on selected new GLC models between 1 January and 31 March 2018, registered by 30 June 2018, excluding Mercedes-AMG models. No ownership option. Cannot be used in conjunction with any other offer. Subject to availability. Terms and conditions apply. Credit provided subject to status by Mercedes-Benz Financial Services UK Limited, MK15 8BA. Guarantees and indemnities may be required. We will only introduce you to a small number of carefully-selected finance providers who may be able to help you finance your purchase. We may receive commission or other benefits for introducing you to such lenders. This introduction does not amount to independent financial advice. Any information provided by Listers Group Limited or any of its representatives is done so on a non-advised basis. Falcon of Hull and Lincolnshire Limited is not a credit lender. Falcon of Hull and Lincolnshire Limited is an appointed representative of Listers Group Limited, Othello House, Stratford-upon-Avon Business and Technology Park, Banbury Road, Stratford-upon-Avon CV37 7GY which is authorised and regulated by the Financial Conduct Authority.





# ALEX WOODYARD'S FANTASY FIVE-A-SIDE

Today sees midfielder Alex Woodyard face his fantasy managerial headache as he selects his fantasy five-a-side team...

**MF: PAUL SCHOLES**

I've put him in for his long-range worldies! What a player he was.

**ST: MICHAEL OWEN**

When he burst onto the scene I don't think anyone had seen anything quite like it. He was always a threat going forward.

**MF: PAUL GASCOIGNE**

'Gazza' is probably the most naturally talented footballer ever to play for England.

**CB: SERGIO BUSQUETS**

He can play at the back for me because he's just such a wonderful footballer and reads the game so well.

**GK: DAVID DE GEA**

I think he's probably the best 'keeper in the world at this moment in time. He's overcome a tough start when he first came to England and done so well.





**3X COURSE  
LUNCH  
FOR THE  
PRICE OF 2  
£15.95 PP**

# The Lakeside RESTAURANT

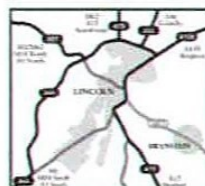


*The Lakeside*  
RESTAURANT



  
**BRANSTON HALL**  
HOTEL

[www.branstonhall.com](http://www.branstonhall.com)



Branston Hall Hotel  
Branston - Lincoln  
LN4 1PD  
T: 01522 793305  
F: 01522 790734  
[info@branstonhall.com](mailto:info@branstonhall.com)

**CONTACT CONFERENCE & BANQUETING**  
T: 01522 793305  
[conference@branstonhall.com](mailto:conference@branstonhall.com)

  
**BRANSTON HALL**  
HOTEL

**TEAR-OUT VOUCHER**  
3 X COURSE LUNCH  
FOR THE PRICE OF 2  
QUOTE REF: LCFC - I

*The Lakeside*  
RESTAURANT

Valid from Sunday to Thursday. Subject to availability, advance booking is advised.





# ON THIS DAY

We recall the competitive matches played by the Imps on this day in the past...

FEBRUARY

3

## 1894

**Having previously travelled south twice to play Woolwich Arsenal in friendlies (losing both times) today marks the 124th anniversary of the first ever Football League meeting between City and Arsenal.**

Despite being the first London side to compete in the Football League they were not the big club they are today and the crowd only numbered between 1,800 and 2,000, although around 60 supporters had travelled up from St Pancras station with the Arsenal team.

Despite the visitors winning the toss and electing to have the advantage of the breeze in the first-half it took City just 15 minutes to open the scoring when Joe Raby shot home after Arsenal 'keeper William Jeffery could only push William Graham's fierce shot into his path. Within 60 seconds Raby had the ball in the net again only to be ruled offside but it only took a further five minutes for the lead to be doubled when Albert Flewitt bundled the ball home after a goalmouth scrimmage.

As Arsenal had found in the first-half having the benefit of the wind wasn't an advantage initially to City, after the interval as the visitors created several chances but "their shooting was not true" and eventually City began to take control. He spent most of the latter period of the game in the Arsenal half, hitting the bar on a couple of occasions as well as having another goal disallowed when a free-kick went straight into the net without anyone else touching the ball. Eventually Raby again beat Jeffery to score a third and final goal and secure the two points which saw City stay in eighth place in the 15-team division with 20 points from 18 games, whilst Arsenal remained tenth with 14 points from 17 games.



## 2007

**Our last fixture on this date saw the Imps, sitting in third place in the table on 56 points from 30 games and as top scorers in Division Two with 55 goals, visit a Notts County side who were eighth but 14 points behind City.**

Considering more City players have also played for County than any other club it was no surprise that four players on both sides (for County Jason Lee, Lawrie Dudfield, Stephen Hunt and Junior Mendes and for City Mark Stallard, Jamie Forrester, Paul Mayo and Spencer Weir-Daley) would feature for both clubs at some point in their careers, whilst ex-Imp Steve Thompson was in charge of the home side.

The game got off to the worst possible start for City as Jay Smith opened the scoring for the hosts after just two minutes, but City quickly regained their composure and created a host of chances, all squandered with Stallard being guilty on several occasions. Lincoln also hit the post through Jeff Hughes before a mad few minutes just before half-time virtually finished the contest. On 41 minutes Forrester inexplicably kicked out at Austin McCann and gave referee Uriah Rennie no choice but to issue a straight red card and with seconds of the half left Lee doubled County's lead.

Mayo was sacrificed at half-time for Dany N'Guessan as City went three at the back in an attempt to get something out of the game, but County dictated the second-half launching wave after wave of attacks but they only managed to add one more goal through Dudfield just after the hour mark, with Weir-Daley scoring an 89th-minute consolation.

City went on to win the next two games, the second a 2-1 win at leaders and eventual champions Walsall, which saw the team move up to second in the table, just two points behind the Saddlers. However, just 12 points from the final 13 games meant a fifth-place finish, 11 points off third spot and 15 behind Walsall, and a fifth successive failure in the play-offs as Bristol Rovers won 7-4 on aggregate.







LIFE AFTER LINCOLN

# MATT CARMICHAEL

Coming into professional football after serving in the army, Matt Carmichael did so well at Sincil Bank he was Player of the Year in 1991-92...

**M**accr' went on to play alongside David Beckham at Preston, at Wembley for Darlington, taste football overseas and come back to Lincoln in the role of kit-man.

Born in Singapore, Carmichael spent a decade growing up in his dad's home city of Glasgow, where he became a Rangers fan. "I was quite late coming into the game at 25. I'd been in the army and had played at a good level, including for Wycombe in the Conference, but I thought there was no chance of me playing as a professional. I'd had a trial with Brentford when Steve Perryman was in charge but it didn't quite pan out," he recalls.

Given a chance with The Imps in 1989, Carmichael hit the ground running, saying: "On my debut I scored when we beat Scunsky 1-0 at home and then we played Aldershot away and we won 1-0 again, and I scored again. We had a good side. We were doing well but the season just petered out.

"Murph' [manager Colin Murphy] left and Allan Clarke came in. That was a bad point for me because he didn't like anyone who came from non-league. When 'Thomo' [Steve Thompson] took over things improved. 'Thomo' had been running the reserves and I'd been playing with him at the back. When he took over the first-team he asked me, 'Why don't you play at the back?'



**...A striker's job is hard but I just had a knack for scoring goals and I was reasonably quick for a big lad but centre back was my best position...**

"I'd played at the back for the army because we had Guy Whittingham up front."

Whittingham went on to set Portsmouth's record for goals in a season, smashing 48 in during 1992-93. While he played in defence in becoming The Imps' Player of the Year, Carmichael was no-one's fool in front of goal and hit 24 in a season for Scunthorpe, including a club record of scoring for eight games in a row in his first campaign after leaving Lincoln in 1993.

Should Lincoln have utilised Carmichael up front more? "I could read the game well and I was comfortable with the ball at my feet," he explained. "I'm 6ft 2in and good in the air. A striker's job is hard but I just had a knack for scoring goals and I was reasonably quick for a big lad, but centre-back was my best position."

Carmichael played for former England goalkeeper Ray Clemence in a brief loan at Barnet but it was his next stop where he teamed up with someone destined to be an even bigger name: David Beckham.

"Oh he was rubbish!" laughs Matt. "He was there when I went but I'd never heard of this kid. He was a really good, intelligent footballer. He set my first goal up for Preston. He played the ball in for me and I headed it into the top corner. It was against Bury, we beat them 5-0 and I scored two."

Like Beckham, Carmichael tried football overseas but in his case it was in Finland.

"I loved it. I scored on my debut when we played in Helsinki and I was marked by Sami Hyypia, who went on to play for Liverpool," he reminisces.

After playing extensively in non-league into his late thirties Matt then returned to Lincoln as kit manager, before a brief taste of management with Lincoln Moorlands Railway.

## FACTBOX: MATT CARMICHAEL

### LINCOLN CITY 1989-93 LEAGUE RECORD:

113 +20 games / 18 goals

**ALSO PLAYED FOR:** Durrington Rangers, Salisbury City, Wycombe Wanderers, Bromley, Basingstoke Town, Scunthorpe Utd., Barnet (loan), Preston North End, Mansfield Town, Doncaster Rovers, Darlington, TIPS Turku, Aylesbury Utd., Ilkeston Town, Stamford, Boston Utd., Grantham Town, Stamford (second spell), Wisbech Town, Lincoln Utd.

**MANAGED:** Lincoln Moorlands Railway



Trevor Swinburne with former players, Dennis Leigh and Trevor Meath

## FORMER PLAYERS' ASSOCIATION

**A warm welcome to the fans, players and staff of Swindon Town, who come to Sincil Bank in good form of late and no doubt seeking to avenge the home defeat we inflicted on them back in October.**

They will, of course, find a Lincoln City team also enjoying good form coming into this game on the back of another exciting win under the lights against Newport County on Tuesday night.

The Lincoln City Former Players' Association guests today will be Dennis Booth and Ian Baraclough. Dennis was a stalwart of the Graham Taylor side of the mid-70s and followed Graham to Watford where they both enjoyed further success. Ian played at Sincil Bank in the early '90s and enjoyed a spectacular career of over 600 games in total. Ian is currently the Northern Ireland Under-21s manager. It will be great to welcome them both in the Fanzone today.

This week saw the closure of the January transfer window but I write these notes while the window is still open. Whether or not Danny makes any more additions to the playing squad, we are in good shape to be competitive for the rest of the season. It is pleasing to see players who don't get regular match time, coming into the team and adding value to an already well-balanced team.

The Former Players' Association has brought almost 40 different players to the Fanzone so far this season, in addition to this we have had representatives from every post-war generation and continue to expand our work of adding value to both the club and its partner organisations.

We are currently exploring means of generating funds into our fledgling organisation, one of these methods is to attract sponsors to support our work which will impact on the club, the fans and the wider community. If this is something that appeals to you please get in touch by email at [FPA@lincolncityfc.co.uk](mailto:FPA@lincolncityfc.co.uk).

Enjoy the game.  
**Trevor Swinburne**





BISHOP  
GROSSETESTE  
UNIVERSITY

# WORRIED ABOUT RESULTS DAY?

GET YOUR **FREE** RESULTS DAY  
SURVIVAL KIT NOW...JUST IN CASE!

[www.bishopg.ac.uk/JustInCase](http://www.bishopg.ac.uk/JustInCase)



TWO LARGE & **18**<sup>99</sup>  
PIZZAS ONLY



“ Love your pizza or we'll deliver you another, absolutely free ”



**LINCOLN - 01522 513161**  
415-416 High Street, LN5 8HX

**PAPAJOHNS.CO.UK**

\*Terms and Conditions apply. \*Terms and conditions apply, see online. Like for like exchange, excludes temperature and delivery time, no more than 2 slices eaten, claim within 30 minutes of delivery or on collection.





MURPHY'S MISSION

# THIRTY YEARS ON...



Phil Brown sends a diving header against the post during the Imps' 2-1 win over Maidstone United in the Third Round of the FA Trophy on 13th February 1988.





Bridge  
McFarland  
Solicitors

Proud supporters of



Save **10%** on our legal services with  
your Lincoln City FC season ticket

**Exclusive Lincoln City FC season  
ticket holder offer includes\*:**

- Buying and/or selling a property
- Wills and Powers of Attorney
- Employment Law services
- Sports Law

### Lincoln Office

🏠 Sibthorp House  
351-355 High Street  
Lincoln  
LN5 7BN

☎ 01522 518 888  
✉ [info@bmcf.co.uk](mailto:info@bmcf.co.uk)



\*You will need to take your season ticket with you to the appointment. Terms and conditions apply.

[www.bridgemcfarland.co.uk](http://www.bridgemcfarland.co.uk) | 01522 518 888





# ASHTON'S MUTTERINGS

Lifelong supporter and club volunteer Chris Ashton discusses the challenge the Imps face this afternoon and putting dreams of Wembley on hold, for now...

**T**he Imps and the travelling faithful continue to have a break from their journeys around the nation as City play the third of four successive home games, with the visit of Swindon Town to Sincil Bank this afternoon.

This is the second so called 'six pointer' of the week, following Tuesday nights' visit by Newport County, as the battle for the automatic and play-off promotion places in Sky Bet League Two becomes ever tighter and competitive.

One would have to live on another planet not to be aware of the great excitement and, dare I say, expectation in the city of Lincoln about Tuesday night's Checkatrade Trophy semi-final against Chelsea Under-21s, and the potential for the Imps to make their first ever visit to Wembley.

Not to sound trite and 'old school' but everybody's attention this afternoon must be focused on the game against Swindon. This is the most important game of the week and any thoughts of Chelsea or Wembley must be banished from the mind in the quest for three precious points. One thing I know for sure is that Danny, Nicky and the rest of the management team will have ensured that message has been well and truly 'drilled' into the team, just as it was to positive effect in the league games preceding the cup ties last season.

As indicated by the fact today is a 'six pointer', Swindon like the Imps are in the chase for League Two glory. That is mainly due to their excellent away form, with them appearing to find it easier to win away rather than what I will always call the County Ground.

The Imps won at Swindon in the first encounter between the two clubs back in October on a miserable evening, but the weather was soon forgotten by the Imps' travelling faithful as a late Sean Raggett header from a corner secured the three points. If there is such a thing, then it was a typical City goal - scored through so many people doing the right thing

and performing their part in a set-piece routine. As Danny commented after the game it took eight players to make the goal happen and they all did. Such is the meticulous planning, practice in training and carrying out in a game from the management team and players for it to come to fruition.

A further example of this came in the last away game - a fortnight ago at Barnet - when James Wilson, within 75 seconds of coming on for his Imps debut, knew exactly the right place to move to for a different corner routine to net his first goal for the club. No further proof is surely needed of how well the Imps are prepared and organised than that a man within two days of signing for the club, and less than two minutes into his debut, executes a plan along with his teammates doing their part correctly to score a set-piece goal.

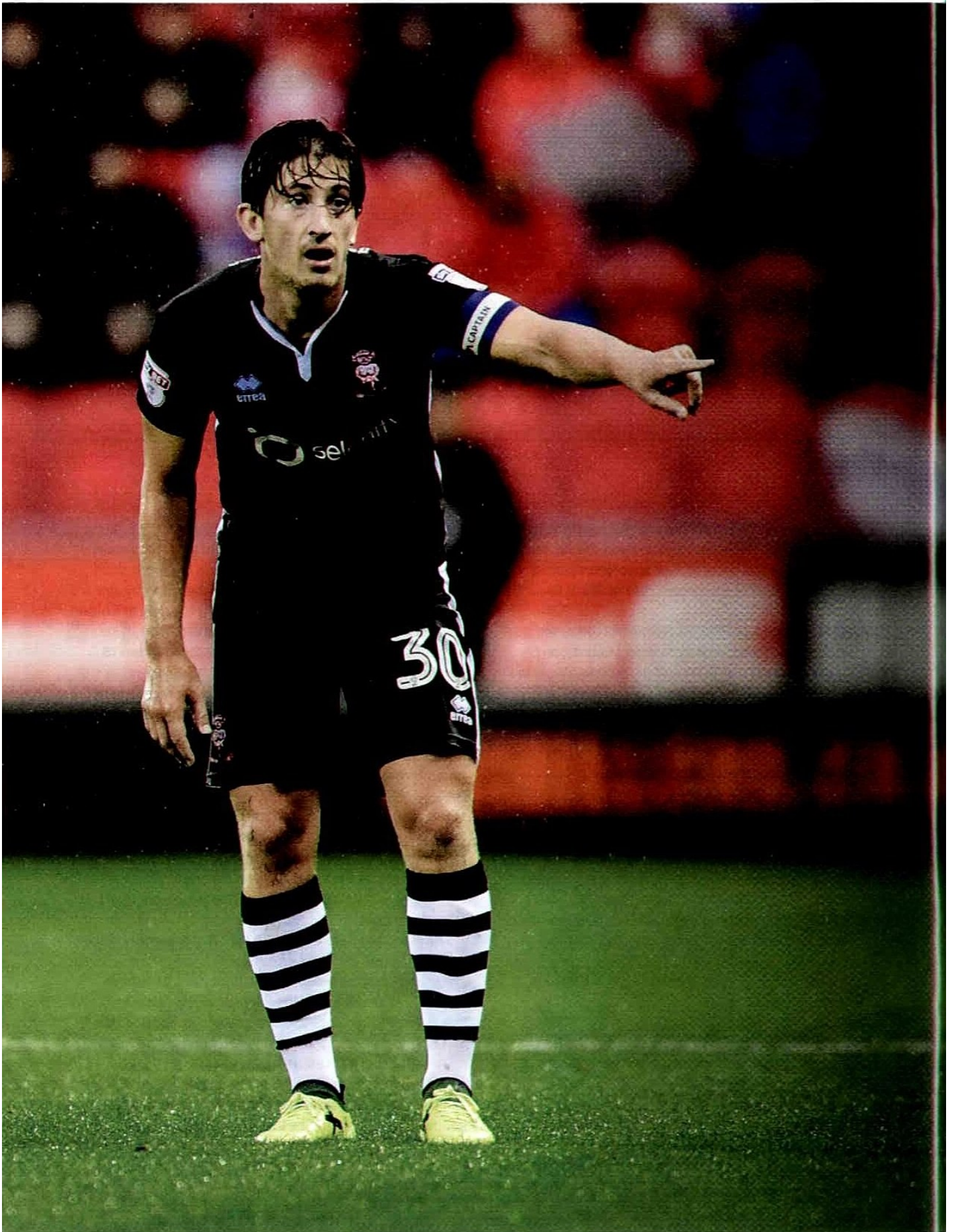
Many of you who have had the privilege and pleasure to have been on one of the FPS visits to the club on a Thursday have witnessed first-hand the organisation, sheer hard work and extra practice put in on their various roles, not only in the execution of City's set-pieces but also the defending of the opposition ones.

I have written before, and still feel, that the performance at Swindon was the most professional and best away league performance of the season so far. It may not have been free-flowing purist football but it was a well-disciplined, well organised performance with the perfect ending of a late winning goal against a side who were playing two leagues higher than City last season.

As I've already commented Swindon are performing and achieving very well away from home and undoubtedly are a good side, so we should be in for a tight game this afternoon before hopefully the Imps gain the three points and then thoughts - after reflecting on today's match - can turn to Tuesday evening and achieving the dream of reaching Wembley.

**Up the Imps!**







# WITH ALEX WOODYARD

Midfielder Alex Woodyard saw no reason to depart Lincoln City for pastures new, having turned down the chance to leave Sincil Bank this month.

**You've proven to be quite the popular character this week after making the decision to stay with the Imps...**

**AW:** Yeah it was a tough decision in one respect, but it was also an easy decision too. I love playing football for Lincoln. We're doing really well, pushing for the play-offs at the minute and only a few points off the automatic spots as well. It just didn't feel like the right time for me. I'm enjoying my football and we're playing well as a team.

**How did the rest of the lads react to your decision?**

**AW:** To be honest, you don't talk about it much in the changing room. When it came out that I said I was staying, the lads were happy with me, of course. Like any player, I have aspirations to play higher but I feel I can do that with Lincoln, so I see no reason to leave at this time.

**How did you feel about the reaction you got from the fans on Tuesday night?**

**AW:** To be honest I was so focused on the game, I can't say I noticed or heard anything. I was just focused on the game. Hearing the song being sung though, that's another reason why I wanted to stay. The fans are so good to me. They've really taken to me since I first came in and we're all pulling together in the right direction. I'd hate to not be a part of what's to come here.

**Well, you've played a big part so far by featuring in every league game...**

**AW:** Yeah I'm quite proud of it, but I've done it for the last three or four seasons. When you get into that rhythm of

playing it becomes easier to play in games back-to-back. My body is used to it and coping well, so I'll just keep pushing myself to do well whilst I'm involved.

**Is there any part of your game you're actively looking to improve?**

**AW:** You're always looking to improve your game and work on things. But it's important to get even better at the things you feel are your strengths. I'm always trying to improve as a player out on the training pitch to better myself and benefit the team.

“ ”

...Like any player, I have aspirations to play higher but I feel I can do that with Lincoln so I see no reason to leave at this time...

**Do you have any superstitions before a match or heading out to training?**

**AW:** Not really, but if I feel I've had a good game one week, I'll try and keep that same routine heading into the next game to try and replicate my performance. I suppose the only thing I do as a routine in getting ready for a match is that I make sure I've got my boots and shinpads on before the match shirts goes on!



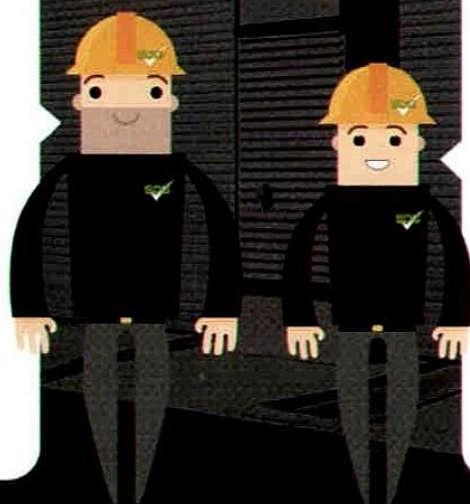


## SDG Supply and Install High Quality Security Solutions

Get in touch with one of our experts today !

### We specialise in...

- ✓ Industrial Doors
- ✓ Automatic Doors
- ✓ Auto Gates & Barriers
- ✓ Installation & Repairs
- ✓ Preventative Maintenance



### 24/7 Emergency Callout

Have you been affected by  
**Wind or Storm Damage?**

We recognise, the importance of getting your premises secure again after a flood, wind, break in, **mechanical failure** or **accidental damage** to any of your doors.

We have a dedicated workforce which are on call  
**24 hours a day 7 days a week.**

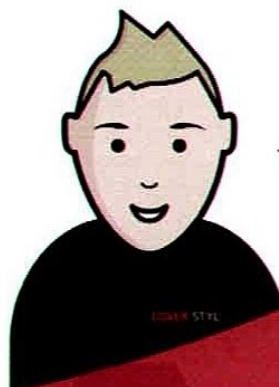
t: 0800 978 8811

e: [sales@SDGaccess.co.uk](mailto:sales@SDGaccess.co.uk)

w: [sdgaccess.co.uk](http://sdgaccess.co.uk)

## COVER STYL'

Cover Styl' is quick & easy to install,  
cost effective and  
environmentally friendly.



Breathe new life  
into your  
**Furniture & Interior**  
surfaces thanks to  
Cover Styl'

Before



After



### New Theatre Royal Lincoln

We were commissioned by owners of the  
**New Theatre Royal Lincoln** to refurbish  
their **bar and reception area**; covering  
their existing, dark plastic bar front with a  
**lighter, more modern design.**

t: 01522 811175

w: [cover-styl.co.uk](http://cover-styl.co.uk)

e: [sales@cover-styl.co.uk](mailto:sales@cover-styl.co.uk)





# IMPS

## IN THE COMMUNITY



### JUNIOR TAKEOVER DAY

**T**oday's match is a very special one for Lincoln City FC as it is our first official Junior Takeover Day. Around the ground you will see members of the Junior Imps Club and the Co-op Junior members shadowing the familiar faces that you see on a matchday.

We had over 150 applications from young Lincoln City fans who wanted to be a part of this once in a lifetime experience. The applications were of a really high standard and the selection process was a very difficult one. We received applications in the form of videos, PowerPoints, letters and a folder filled with reasons that this applicant should be successful. Some of the applications would give their mentors a run for their money!

**These are the successful applicants and their job roles.**

**First-Team Manager:** Scarlet Rawson  
**First-Team Assistant:** Isabella Rawson  
**First-Team Player:** Broden Hislen  
**Community Staff:** Alfie Lester  
**Photographer:** Charlie Tozer  
**Media Manager:** Ruby Anderson  
**Catering Manager:** Sophie Vickers  
**Groundsman:** Michael Bellshaw  
**Poachers Assistant:** Daniel Stephenson  
**Referee:** Freya Vine/Evie Randman  
**Chief Executive:** Zane Pinder  
**Tannoy Announcer:** Rafi Fox  
**Commercial Manager:** Olly Hodson  
**Commentator:** Max Harmer  
**Stadium Manager:** Frank Goodman

We hope that all the children involved get a great insight as to what happens on a match day and they remember this experience for the rest of their life. Enjoy the day and hope you, as supporters, enjoy seeing our Junior Imps make an impression on the day.

### JUNIOR IMPS CLUB VIP

**T**he VIP experience is proving very popular with our members and for the Newport County match Luis Rosa was our VIP and he chose Harry Anderson as his Man of the Match. After the game the Junior Imps VIP's had a chance to speak to their MOM choice and also meet other members of the playing squad.

For more information about joining the Junior Imps Club and all the benefits of being a member, which is only £10.00 per year to sign up your child (must be 14 and under), then visit [www.lcfcset.com](http://www.lcfcset.com) or email [JIC@lcfcset.co.uk](mailto:JIC@lcfcset.co.uk). Come and join the Imps family.

### FINLAY AND ELLIS COUSER CELEBRATE THEIR SPECIAL DAY WITH THE IMPS

**T**oday, Finlay Couser is celebrating his 8th birthday and Ellis Couser is celebrating his 6th birthday with their friends here at Lincoln City.

Finlay and Ellis will take part in footballing activities, have a photo with a player and then get to walk out with the boys plus much more. We wish Finlay and Ellis a happy birthday and hope that they enjoy their day with the Imps.





# ALWAYS ON THE BALL

Built for ultimate adventure



## OVER 50 YEARS IN MOTORCYCLING

Looking to take the road aboard a motorcycle? There's no better place to start than Webbs of Lincoln Motorcycles, with an extensive range from mopeds to superbikes, for your commute or just for the weekend, even used bikes and servicing. Come see us and start your journey.

Webbs of Lincoln  
117 - 121 Portland Street, Lincoln, LN5 7LG  
Tel 01522 513193 [www.webbsoflincoln.co.uk](http://www.webbsoflincoln.co.uk)

**WEBBS**  
OF LINCOLN  
MOTORCYCLES



# IMPS QUIZ TIME

## KNOW YOUR OPPOSITION?



1. Where do Swindon play their home games?
2. What is Swindon's nickname?
3. Who is Swindon's manager?
4. True or false, Swindon played in League One last season?
5. Who is Swindon's leading goalscorer so far this season?

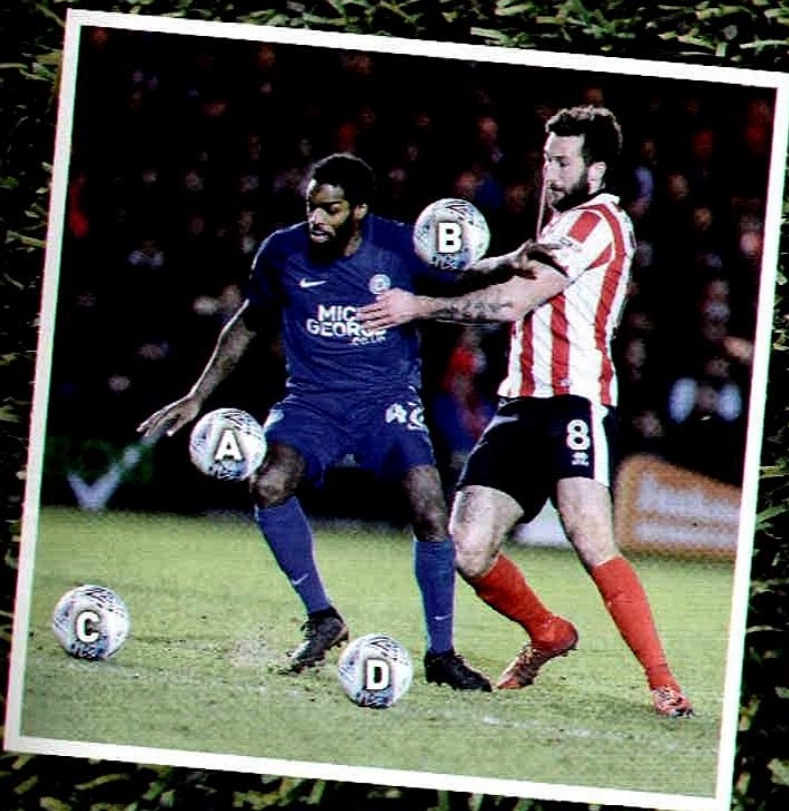
## MANAGER WATCH

CAN YOU MATCH THESE PREMIER LEAGUE BOSSES TO THE CLUBS THEY ARE IN CHARGE AT?



## SPOT THE BALL

IS THE BALL HIDDEN UNDER A,B,C OR D?



ANSWERS: MANAGER WATCH: 1. Jose Mourinho - Manchester United, 2. Jurgen Klopp - Liverpool, 3. David Fillet - Huddersfield Town, 4. Mauricio Pochettino - Tottenham Hotspur, 5. Luke Norris (12) SPOT THE BALL: C





## FOR ALL THINGS MINI. SOPER OF LINCOLN.

PROUD SPONSOR OF LINCOLN CITY FOOTBALL CLUB.

SALES | SERVICE  
PARTS | BODYSHOP

SEARCH:  
SOPER OF LINCOLN MINI.



Official Fuel Economy figures for the MINI John Cooper Works Hatch range: Urban 34.0-39.2 mpg (7.2-8.3 l/100km), Extra Urban 54.3-57.6 mpg (4.9-5.2 l/100km), Combined 44.8-49.6 mpg (5.7-6.3 l/100km). CO<sub>2</sub> Emissions 147-133 g/km. Figures are obtained in a standardised test cycle. They are intended for comparisons between vehicles and may not be representative of what a user achieves under usual driving conditions.

## FOR EVERYTHING BMW.



The Ultimate  
Driving Machine



PROUD SPONSOR OF LINCOLN CITY FOOTBALL CLUB.

- |                      |                        |                              |
|----------------------|------------------------|------------------------------|
| • New Car Sales      | • BMW i                | • Bodyshop                   |
| • Approved Used Cars | • Motability           | • Alloy wheel refurbishment  |
| • Business Sales     | • Soper service centre | • Free wheel alignment check |
| • SMART repairs      |                        |                              |

SEARCH: SOPER OF LINCOLN BMW.

Official fuel economy figures for the BMW X4: Urban 42.2-53.3mpg (6.7-5.3 l/100km), Extra Urban 49.6-60.1mpg (5.7-4.7 l/100km), Combined 46.3-57.6mpg (6.1-4.9 l/100km). CO<sub>2</sub> emissions 159-129g/km. Figures are obtained in a standardised test cycle. They are intended for comparisons between vehicles and may not be representative of what a user achieves under usual driving conditions.





# ACADEMY MATTERS



Our academy has enjoyed some brilliant experiences and games recently playing the likes of Coventry City, Derby County and Newcastle United in January. Having already played clubs such as Birmingham City, Nottingham Forest, Sheffield United, Liverpool and Manchester City the young Imps have been exposed to a great range of different experiences.

The Under-14s competed extremely well as they lost 3-1 to Newcastle United at their academy training ground. The game was evenly placed at 0-0 after 65 minutes. Lewis Rowland was the goalscorer.

Our Under-10s had an excellent trip to Derby County and played in some extremely competitive games. The Under-9 to Under-12s also had a recent trip to Coventry City too.





OFFICIAL TECHNICAL SPONSOR



# PROUD PARTNER

#FeelYourPassion



Buy Online

**andreas**cartersports.co.uk

errea.com



## YOUR HEALTH IS OUR GOAL

### **CERTIFICATION OEKO-TEX STANDARD 100**

OUR PRODUCTS ARE CERTIFIED AND DO NOT RELEASE ANY SUBSTANCES WHICH COULD BE HARMFUL TO THE SKIN OR TO HEALTH.

OUR PRODUCTS USE ONLY DYES THAT HAVE BEEN TESTED AND DO NOT POLLUTE THE ENVIRONMENT

OUR FABRICS ARE CERTIFIED. WE MAKE RIGOROUS CONTROLS ON THE CHEMICALS USED, FROM RAW MATERIALS TO FINISHED PRODUCTS.





## TICKETS & TRAVEL



**Friday 9th February**

**Cambs Glass Stadium, Newmarket Road, Cambridge CB5 8LN**  
**SkyBet League Two, kick-off 7.45pm**

Tickets for our trip to face Cambridge United at the Cambs Glass Abbey Stadium, on Friday 9th February in SkyBet League Two, are now on general sale.

They are available from the Sincil Bank Ticket Office and online via eventbrite: [lincolncityfc.eventbrite.com](http://lincolncityfc.eventbrite.com)

Prices are as follows:

South Stand		South Habbin Terrace	
Adults	£20	Adults	£16
64+, Student, 18-21	£15	64+, Student, 18-21	£12
Under-18	£10	Under-18	£8
Under-12	£5	Under-12	£5
Under-5	Free	Under-5	Free

Wheelchair disabled supporters are to contact Cambridge direct on (01223) 566500, tickets are £15 with complimentary carer where applicable. Ambulant disabled should select the age-appropriate ticket and then add the complimentary carer where applicable.

Red Imps Travel are running coaches as usual from Sincil Bank to the game, with the price **£15** for season ticket holders and **£16** for non-season ticket holders, with the coaches leaving the stadium at **3.30pm** on the day of the game.



**Saturday 17th February**

**Checktrade Stadium, Winfield Way, Crawley RH11 9RX**  
**SkyBet League Two, kick-off 3pm**

### IMPORTANT DATES:

**Season Ticket Priority:** Friday 2nd February 10.00am

**General Sale:** Monday 5th February 10.00am

**Postal Order Deadline:** Sunday 11th February 11.59pm

**Sales Deadline:** Thursday 15th February 12.00pm

**Collection Deadline:** Thursday 15th February 2.00pm

**Pay on the Day:** NOT AVAILABLE

CHECKTRADE STAND (SEATING)		THE KR-L STAND (TERRACE)	
Adult:	£20	Adult:	£16
Senior 65+:	£15	Senior 65+:	£12
Under-21:	£13	Under-21:	£11
Under-18:	£10	Under-18:	£10
Under-16:	£4	Under-16:	£4
Under-11:	£1	Under-11:	£1
Family (1 Adult + 1 U16):	£17	Family (1 Adult+1 U16):	£15
Family (2 Adult + 2 U16):	£34	Family (2 Adult+ 2 U16):	£30

Wheelchair Disabled are to contact Crawley Town direct on 01293 410000 to purchase their ticket, this includes the complimentary carer when needed. Ambulant Disabled are to select the age-appropriate ticket then add the carer as applicable.

Red Imps Travel coaches depart Sincil Bank at **9.15am** and cost is **£24** for season ticket holders and **£25** for non-season ticket holders.

## LINCOLN CITY FC 2017-18 MATCH ADMISSION PRICES

### ALL MAIN STANDS

Category	Early Bird (Match Day)
Adult	£18 (£20)
Concession (60+/disabled)	£14 (£15)
Junior (under-18)	£7 (£8)
Student (full-time with ID)	£7 (£8)
Family (adult+junior)	£22 (£22)
Family (conc+junior)	£17 (£17)

### SRP VIP LOUNGE

Category	Early Bird (Match Day)
All Age Categories	£43 (£45)

### NOTES:

**Junior:** Under 18 years of age

**Concession:** 60 years or over / Disabled with proof of medium/high rate of Disability Living Allowance (DLA) or any rate of Personal Independence Payment (PIP). To qualify for a complimentary helper's ticket, the supporter must be in receipt of a high rate of DLA or the enhanced rate of PIP. Proof of such criteria is always required when applying for tickets and will only be issued at the discretion of LCFC. Wheelchair disabled supporters will be located in the Bridge McFarland Stand.

**Student:** In full-time education. Valid Photo ID will be required if purchasing tickets in advance and on entry via the turnstiles on match day.

**Family Tickets:** Must be purchased in person from the Stadium Ticket Office. They are not available at the turnstiles. Additional single tickets will be available for purchase at the normal Early Bird / Match Day rate.

Early Bird prices will be in operation until 5.00pm on the last working day before the day of the game.

Tickets can be purchased online at [lincolncityfc.eventbrite.com](http://lincolncityfc.eventbrite.com) or in person at the Stadium Ticket Office or by telephone using a credit/debit card on **01522 880011**.

### Ticket Office opening hours:

**9.00am-5.00pm** Monday-Friday

**10.00am-5.15pm** (Saturday home game)

**9.00am-10.00pm** (Midweek home game)

Please note that cheques are not accepted as payment for match tickets.



**IMPS PREMIER***Plus*

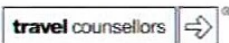
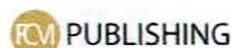
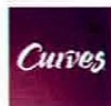
Your Business  
Your Network  
Your Club

## 'IMPS PREMIER PLUS' IS LINCOLN CITY FC'S BUSINESS CLUB

Our package has been specially created with businesses in mind with emphasis on helping make your business more visible to the public and increase revenue.

Main features of the package are – invitation to monthly networking meetings, free executive box and room hire on non-match days, 23 match tickets for you and your staff, promotion of your business on social media and in our programme, plus other great benefits.

Create your own bespoke package to best suit the needs of you and your business, all for just **£35 a month + VAT**





# COMMERCIAL CORNER

**T**his afternoon's Sky Bet League 2 fixture v Swindon Town is kindly being sponsored by **VITAL LINCOLN CITY**.

Founded in 2005, Vital Lincoln City is the leading social media site for supporters of the Imps. Fans are invited to contribute to a vast range of features including match previews, reports, transfer speculation, ticket information, historical articles, competitions and much more. Contributions from club directors and other personnel ensure that the voice of the supporters is taken seriously by the club. Besides being a great way to keep in touch with everyday events, it offers the opportunity for every fan to have their say on everything to do with Lincoln City. Interested? Go to [www.lincoln.vitalfootball.co.uk](http://www.lincoln.vitalfootball.co.uk) and register today.

The Man of the Match Sponsor this afternoon is **TOMMY CARTER ASSOCIATES**. Tommy is a young Imps supporter who has gathered family and friends, all City fans alike, to join him today to enjoy this special occasion at Sincil Bank. We hope that Tommy and his guests have a fantastic afternoon.

Our Match Ball Sponsor this afternoon is **GS HUGHES LTD**. We are delighted to welcome Glynn and his guests to the match today here at Sincil Bank. This is the third time they have sponsored the club this season and hopefully we can pick up a vital win. GS Hughes Ltd are a Lincoln based business that specialise in plant hire and quarrying. For more information on their business please contact them by telephone, 01522 869666. We hope all of our sponsors enjoy today's big match v Swindon Town.



LAST TIME OUT: LINCOLN CITY VS PETERBOROUGH UNITED

## BOX HOLDERS 2017-18

Lincoln Towbar & Mobility Centre

BOX 3

UNIVERSITY OF LINCOLN

BOX 4

selenity

BOX 5

Running Imp

BOX 6

nicholsons  
chartered accountants  
and business advisers

Sleafordian  
STADIUM agency

Butterfly  
FOOTWEAR LIMITED

Brownhills  
The UK's Largest Moormans Dealer

andenor.com

BOX 7

BOX 8

BOX 10

BOX 11

BOX 12

ED HALL SERVICES

AEROEAB FABRICATIONS LTD

GLOBAL VISION  
Security Solutions

MGB TOOL SUPPLIES

vanarama  
LINCOLN

BOX 14

BOX 15

BOX 16

BOX 17

BOX 18



# **BANNED IN THE MORNING YOU'RE GETTING BANNED IN THE MORNING**

**All 72 EFL Clubs have signed up  
to a new Chairman's Charter to  
help put an end to the dangerous  
use of pyrotechnics.**

**It is already a criminal offence to enter a football stadium  
while in possession of a flare, smoke bomb or firework.**

**Any supporter now found to be in breach of the terms  
of the Chairman's Charter will also face a minimum  
three-season Club ban.**







# SKY BET LEAGUE TWO TABLE

sky BET LEAGUE TWO EFL		P	HOME					AWAY					+/-	PTS
			W	D	L	F	A	W	D	L	F	A		
1	LUTON TOWN	30	11	1	3	44	16	7	5	3	22	14	+36	60
2	WYCOMBE WANDERERS	29	8	3	3	30	19	7	4	4	25	21	+15	52
3	NOTTS COUNTY	29	9	4	2	28	14	5	5	4	20	18	+16	51
4	COVENTRY CITY	29	10	2	3	22	9	5	3	6	12	12	+13	50
5	MANSFIELD TOWN	29	8	5	1	26	15	5	6	4	17	17	+11	50
6	SWINDON TOWN	29	6	2	7	19	27	10	0	4	26	13	+5	50
7	ACCRINGTON STANLEY	28	8	2	3	26	14	7	2	6	22	20	+14	49
8	LINCOLN CITY	29	8	5	2	25	12	5	4	5	16	16	+13	48
9	EXETER CITY	27	10	0	3	20	11	5	3	6	18	22	+5	48
10	NEWPORT COUNTY	30	6	6	2	20	13	6	4	6	21	23	+5	46
11	COLCHESTER UNITED	30	6	6	3	23	15	5	4	6	17	22	+3	43
12	CRAWLEY TOWN	30	6	2	7	15	15	6	4	5	17	20	-3	42
13	CARLISLE UNITED	29	5	5	5	21	16	6	3	5	18	21	+2	41
14	STEVENAGE	30	6	6	3	27	17	4	2	9	11	24	-3	38
15	CAMBRIDGE UNITED	29	8	3	3	18	11	2	5	8	10	28	-11	38
16	CHELTENHAM TOWN	30	6	4	5	20	18	3	4	8	20	27	-5	35
17	GRIMSBY TOWN	31	4	5	7	13	20	5	3	7	15	23	-15	35
18	PORT VALE	30	5	3	7	19	21	4	3	8	15	20	-7	33
19	YEOVIL TOWN	29	6	4	5	23	16	2	3	9	18	34	-9	31
20	MORECAMBE	30	5	3	7	16	21	2	6	7	13	20	-12	30
21	CREWE ALEXANDRA	29	6	2	7	21	24	3	0	11	13	25	-15	29
22	CHESTERFIELD	30	5	3	7	16	20	2	3	10	14	33	-23	27
23	FOREST GREEN ROVERS	29	5	2	8	20	26	2	3	9	11	25	-20	26
24	BARNET	29	3	4	7	12	17	2	3	10	16	26	-15	22

## TOP FIVES

### SHOTS ON TARGET

1	EISA	42
2	DENNIS	36
3	UCHE IKPEAZU	36
4	NORRIS	34
5	ADEBAYO AKI...	32

### MINUTES PER GOAL

1	HYLTON	141
2	KEE	151
3	SZMODICS	153
4	TYSON	163
5	GRANT	164

### % OF GOALS INVOLVED IN

1	DOIDGE	58
2	POPE	53
3	KEE	50
4	DENNIS	50
5	UCHE IKPEAZU	43

### MINUTES PER CHANCE CREATED

1	TAYLOR	178
2	REID	195
3	COOPER	221
4	MCALINDEN	248
5	WRIGHT	281





# LINCOLN CITY SEASON STATS 2017-18

DATE	OPPOSITION	KD/FA	COMP	ATT (AWAY)	PTS	POS	REF	STARTING XI							
<b>AUGUST 2017</b>															
Sat 5th	WYCOMBE WANDERERS	0-2-2		5,538 (1,431)	1	11	G Harwood	Farman	Long	Eardley	Dickie	Raggett	Woodyard		
Tue 8th	ROTHERHAM UNITED	1-1-2		5,485 (1,705)	-	-	S Stockbridge	Vickers	Long	Eardley	Dickie	Raggett	Woodyard		
Sat 12th	MORECAMBE	0-1-1		8,060 (124)	2	18	G Ward	Farman	Long	Eardley	Dickie	Raggett	Woodyard		
Sat 19th	EXETER CITY	1-0-1		3,960 (316)	2	22	C Hicks	Farman	Long	Eardley	Waterfall	Raggett	Woodyard		
Sat 26th	CARLISLE UNITED	W 4-1		8,345 (616)	5	13	E Elderton	Farman	Long	Eardley	Waterfall	Raggett	Woodyard		
Tue 29th	MANSFIELD TOWN	W 3-1		2,495 (898)	-	-	D Webb	Farman	Long	Habergham	Waterfall	Dickie	Woodyard		
<b>SEPTEMBER 2017</b>															
Sat 2nd	LUTON TOWN	0-0-0		9,332 (1,268)	6	14	T Nield	Farman	Long	Eardley	Waterfall	Raggett	Woodyard		
Sat 9th	STEVENAGE	W 2-1		3,427 (1,171)	9	11	A Backhouse	Farman	Long	Eardley	Waterfall	Raggett	Woodyard		
Tue 12th	FOREST GREEN ROVERS	W 1-0		1,887 (321)	12	5	G Salisbury	Farman	Eardley	Habergham	Dickie	Raggett	Woodyard		
Sat 16th	MANSFIELD TOWN	1-0-1		9,563 (1,459)	12	10	R Jones	Farman	Eardley	Habergham	Dickie	Raggett	Woodyard		
Sat 23rd	NOTTS COUNTY	1-1-4		11,672 (4,140)	12	12	S Stockbridge	Farman	Eardley	Habergham	Dickie	Raggett	Woodyard		
Tue 26th	BARNET	W 2-1		7,320 (86)	15	12	T Kettle	Vickers	Eardley	Dickie	Raggett	Habergham	Woodyard		
Sat 30th	GRIMSBY TOWN	0-0-0		7,669 (1,878)	16	11	C Boyeson	Vickers	Eardley	Dickie	Raggett	Habergham	Woodyard		
<b>OCTOBER 2017</b>															
Sat 7th	CHESTERFIELD	W 2-1		9,485 (1,124)	19	10	J Brooks	Vickers	Eardley	Dickie	Raggett	Habergham	Woodyard		
Sat 14th	CAMBRIDGE	0-0-0		8,803 (542)	20	10	K Johnson	Vickers	Eardley	Dickie	Waterfall	Habergham	Woodyard		
Tue 17th	SWINDON TOWN	W 1-0		5,984 (339)	23	9	S Oldham	Vickers	Long	Dickie	Raggett	Eardley	Woodyard		
Sat 21st	CHELtenham TOWN	1-0-1		3,312 (738)	23	10	C Sarginson	Vickers	Long	Dickie	Raggett	Eardley	Woodyard		
Tue 24th	EVERTON U21	W 2-1		3,713 (83)	-	-	G Salisbury	Farman	Long	Dickie	Waterfall	Raggett	Maguire-Drew		
Sat 28th	CRAWLEY TOWN	0-0-0		8,038 (137)	24	9	D Handley	Vickers	Eardley	Dickie	Raggett	Habergham	Maguire-Drew		
<b>NOVEMBER 2017</b>															
Sat 4th	AFC WIMBLEDON	1-0-1		3,384 (1,065)	-	-	A Woolmer	Vickers	Long	Dickie	Waterfall	Eardley	Arnold		
Tue 7th	NOTTS COUNTY	W 2-1		3,026 (178)	-	-	T Nield	Vickers	Long	Waterfall	Raggett	Eardley	Stewart		
Sat 11th	CREWE ALEXANDRA	W 4-1		4,723 (990)	27	8	C Hicks	Vickers	Long	Dickie	Raggett	Eardley	Anderson		
Sat 18th	COVENTRY CITY	1-1-2		9,581 (1,460)	27	10	R Joyce	Vickers	Long	Dickie	Raggett	Eardley	Anderson		
Tue 21st	COLCHESTER UNITED	1-0-1		3,102 (475)	27	11	G Norwood	Vickers	Long	Dickie	Raggett	Eardley	Anderson		
Sat 25th	PORT VALE	W 3-1		7,562 (557)	30	10	A Haines	Vickers	Eardley	Raggett	Waterfall	Habergham	Anderson		
<b>DECEMBER 2017</b>															
Tue 5th	ACCRINGTON STANLEY	W 3-2		3,026 (21)	-	-	C Sarginson	Farman	Long	Raggett	Waterfall	Habergham	Anderson		
Sat 9th	YEOVIL TOWN	W 2-0		2,412 (278)	33	6	L Collins	Vickers	Eardley	Raggett	Waterfall	Habergham	Anderson		
Sat 16th	ACCRINGTON STANLEY	W 2-0		7,596 (135)	36	6	S Stockbridge	Vickers	Eardley	Raggett	Waterfall	Habergham	Anderson		
Sat 23rd	NEWPORT COUNTY	0-0-0		3,514 (483)	37	6	B Huxtable	Vickers	Eardley	Raggett	Waterfall	Habergham	Anderson		
Tue 26th	STEVENAGE	W 3-0		9,268 (190)	40	3	C Boyeson	Vickers	Eardley	Raggett	Dickie	Habergham	Anderson		
Sat 30th	FOREST GREEN ROVERS	W 2-1		8,964 (86)	43	3	M Coy	Vickers	Eardley	Raggett	Dickie	Habergham	Anderson		
<b>JANUARY 2018</b>															
Mon 1st	LUTON TOWN	1-2-4		9,659 (1,044)	43	6	W Kinsley	Vickers	Long	Raggett	Waterfall	Habergham	Anderson		
Tue 9th	ROCHDALE	W 1-0		1,171 (416)	-	-	B Ioner	Farman	Eardley	Waterfall	Bostwick	Habergham	Anderson		
Sat 13th	NOTTS COUNTY	0-2-2		9,603 (1,509)	44	6	R Joyce	Farman	Eardley	Waterfall	Bostwick	Habergham	Rowe		
Sat 20th	BARNET	0-1-1		3,161 (1,861)	45	8	T Nield	Farman	Eardley	Waterfall	Bostwick	Habergham	Rowe		
Tue 23rd	PETERBOROUGH UNITED	W 4-2		6,063 (1,028)	-	-	M Salisbury	Farman	Eardley	Waterfall	Bostwick	Habergham	Rowe		
Tue 30th	NEWPORT COUNTY	W 3-1		7,567 (76)	48	8	S Oldham	Farman	Eardley	Waterfall	Bostwick	Habergham	Rowe		
<b>FEBRUARY 2018</b>															
Sat 3rd	SWINDON TOWN	3PM													
Tue 6th	CHELSEA U21s	7:45PM													
Fri 9th	CAMBRIDGE UNITED	7:45PM													
Tue 13th	CHELtenham TOWN	7:45PM													
Sat 17th	CRAWLEY TOWN	3PM													
Sat 24th	CREWE ALEXANDRA	3PM													
<b>MARCH 2018</b>															
Sat 3rd	COVENTRY CITY	3PM													
Tue 6th	MANSFIELD TOWN	7:45PM													
Sat 10th	CHESTERFIELD	3PM													
Sat 17th	GRIMSBY TOWN	1PM													
Sat 24th	MORECAMBE	3PM													
Fri 30th	EXETER CITY	3PM													
<b>APRIL 2018</b>															
Mon 2nd	CARLISLE UNITED	3PM													
Sat 7th	WYCOMBE WANDERERS	3PM													
Sat 14th	PORT VALE	3PM													
Sat 21st	COLCHESTER UNITED	3PM													
Sat 28th	ACCRINGTON STANLEY	3PM													
<b>MAY 2018</b>															
SAT 5TH	YEOVIL TOWN	3PM													



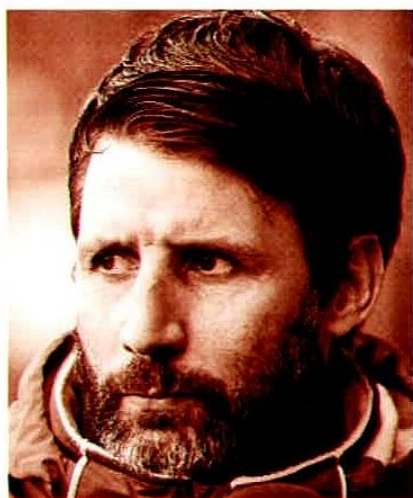


⚪ (58) First Sub (and minute subbed) | ⚪ Second Sub | ⚪ Third Sub | ⚪ Fourth Sub  
 ⚪ Goalscorer | ⚪ Yellow Card | ⚪ Two Yellow Cards | ⚪ Red Card | Home games are in **bold**

# SUBSTITUTES

Bestwick	Ginnelly ⚪	Arnold	Rhead ⚪	Green ⚪	Knott (63)	Maguire-Drew (63)	Palmer (84)	Whitehouse	Howe	Anderson	Vickers
Bestwick	Anderson	Maguire-Drew ⚪	Knott ⚪	Green ⚪	Palmer (63)	Arnold (67)	Rhead (82)	Whitehouse	Howe	Chapman	Fairman
Bestwick	Maguire-Drew ⚪	Arnold	Rhead ⚪	Green ⚪	Palmer (83)	Anderson (83)	Whitehouse	Waterfall	Howe	Knott	Vickers
Bestwick	Maguire-Drew ⚪	Arnold ⚪	Rhead ⚪	Green	Palmer (68)	Knott (68)	Anderson (68)	Habergham	Whitehouse	Dickie	Vickers
Bestwick	Maguire-Drew ⚪	Arnold ⚪	Rhead ⚪	Green	Knott (56) ⚪	Palmer (70)	Anderson (74)	Habergham	Whitehouse	Dickie	Vickers
Whitehouse ⚪	Maguire-Drew ⚪	Anderson	Knott	Palmer ⚪	Bestwick (65)	Earley (65)	Green (77) ⚪	Rhead	Raggett	Arnold	Vickers
Bestwick	Knott ⚪	Arnold	Rhead ⚪	Green ⚪	Anderson (69)	Palmer (78)	Whitehouse (87)	Habergham	Maguire-Drew	Dickie	Vickers
Bestwick ⚪	Knott	Anderson	Rhead ⚪	Green ⚪	Habergham (46)	Palmer (52) ⚪	Ginnelly (69)	Whitehouse	Dickie	Arnold	Vickers
Bestwick	Arnold ⚪	Anderson ⚪	Knott ⚪	Palmer ⚪	Rhead (46)	Ginnelly (63)	Whitehouse (67)	Waterfall	Chapman	Maguire-Drew	Vickers
Bestwick	Anderson ⚪	Knott	Rhead ⚪	Green	Ginnelly (60)	Long (78)	Palmer (78)	Waterfall	Maguire-Drew	Whitehouse	Vickers
Bestwick	Anderson ⚪	Knott	Ginnelly ⚪	Green ⚪	Palmer (70)	Whitehouse (70)	Long (72)	Waterfall	Maguire-Drew	Rhead	Vickers
Bestwick	Ginnelly ⚪	Anderson ⚪	Palmer ⚪	Green ⚪	Whitehouse (67)	Waterfall (90)	Maguire-Drew (75)	Long	Rhead	Chapman	Fairman
Bestwick	Anderson	Arnold ⚪	Palmer ⚪	Green	Ginnelly (61)	Rhead (78)	Maguire-Drew (82)	Long	Whitehouse	Waterfall	Fairman
Bestwick ⚪	Anderson ⚪	Maguire-Drew ⚪	Palmer ⚪	Green	Long (80)	Whitehouse (86)	Ginnelly (77)	Waterfall	Rhead	Arnold	Fairman
Bestwick	Knott ⚪	Ginnelly ⚪	Green ⚪	Palmer ⚪	Maguire-Drew (62)	Arnold (67)	Rhead (69)	Fairman	Long	Whitehouse	Chapman
Bestwick ⚪	Knott	Arnold ⚪	Ginnelly ⚪	Green ⚪	Palmer (58)	Whitehouse (66)	Maguire-Drew (76)	Fairman	Waterfall	Rhead	Chapman
Whitehouse	Knott ⚪	Arnold ⚪	Ginnelly ⚪	Green	Palmer (58)	Maguire-Drew (64)	Rhead (77)	Fairman	Habergham	Waterfall	Chapman
Bestwick	Whitehouse	Ginnelly ⚪	Knott	Palmer ⚪	Stewart (46)	Chapman (69)	Green (78)	Vickers	Earley	Arnold	Woodyard
Woodyard ⚪	Bestwick ⚪	Arnold	Rhead ⚪	Green	Palmer (65)	Knott (71)	Whitehouse (88)	Fairman	Long	Waterfall	Ginnelly
Woodyard	Bestwick	Knott ⚪	Palmer ⚪	Green	Rhead (68)	Whitehouse (83)	Ginnelly (85)	Fairman	Chapman	Stewart	Horton
Bestwick ⚪	Ginnelly ⚪	Whitehouse	Knott ⚪	Palmer	Woodyard (46)	Anderson (59)	Chapman (86)	Fairman	Green	Dickie	Arnold
Bestwick ⚪	Woodyard	Ginnelly ⚪	Whitehouse ⚪	Palmer ⚪	Arnold (71)	Green (74)	Waterfall (80)	Fairman	Rhead	Knott	Stewart
Bestwick	Woodyard	Arnold ⚪	Rhead ⚪	Green ⚪	Whitehouse (68)	Stewart (76)	Palmer (78) ⚪	Fairman	Habergham	Waterfall	Knott
Woodyard	Knott ⚪	Arnold	Whitehouse	Palmer ⚪	Green (46)	Rhead (46)	Stewart (62)	Fairman	Habergham	Waterfall	Ginnelly
Bestwick ⚪	Woodyard	Ginnelly ⚪	Rhead ⚪	Green ⚪	Whitehouse (76)	Palmer (85) ⚪	Long (80)	Fairman	Knott	Dickie	Arnold
Woodyard ⚪	Whitehouse	Ginnelly ⚪	Palmer ⚪	Green ⚪	Dickie (81)	Arnold (86)	Rhead (80)	Vickers	Knott	Earley	Stewart
Bestwick	Woodyard	Stewart ⚪	Green ⚪	Rhead ⚪	Whitehouse (75)	Palmer (78)	Arnold (80)	Fairman	Long	Knott	Dickie
Bestwick	Woodyard	Stewart ⚪	Rhead ⚪	Green ⚪	Arnold (67)	Whitehouse (75)	Palmer (76)	Fairman	Long	Ginnelly	Dickie
Bestwick ⚪	Woodyard	Arnold ⚪	Rhead ⚪	Green	Palmer (69)	Knott (75)	Fairman	Long	Whitehouse	Ginnelly	Dickie
Bestwick	Woodyard	Arnold ⚪	Rhead ⚪	Green ⚪	Whitehouse (71)	Palmer (75)	Ginnelly (78) ⚪	Fairman	Long	Chapman	McCombe
Bestwick ⚪	Woodyard	Arnold ⚪	Rhead ⚪	Green ⚪	Whitehouse (71)	Palmer (75)	Ginnelly (78)	Fairman	Long	Chapman	McCombe
Bestwick ⚪	Woodyard	Whitehouse ⚪	Rhead ⚪	Green ⚪	Ginnelly (45)	Knott (80)	Dickie (78)	Fairman	Palmer	Arnold	Stewart
Whitehouse	Woodyard ⚪	Rowe ⚪	Rhead ⚪	Green ⚪	Arnold (56)	Palmer (62) ⚪	Knott (70)	Antkowiak (81)	Long	Chapman	Stewart
Frecklington ⚪	Woodyard	Williams ⚪	Rhead ⚪	Green ⚪	Whitehouse (48)	Arnold (72)	Palmer (79)	Long	Wilson	Vickers	Stewart
Frecklington	Woodyard	Williams ⚪	Rhead ⚪	Green	Wilson (45) ⚪	Anderson (45)	Palmer (64)	Long	Whitehouse	Vickers	Stewart
Frecklington ⚪	Whitehouse	Anderson ⚪	Rhead ⚪	Green ⚪	Long (64)	Palmer (65)	Stewart (69)	Vickers	Howe	Chapman	Arnold
Frecklington	Woodyard	Anderson	Rhead ⚪	Green ⚪	Wilson (61)	Palmer (65) ⚪	Williams (79)	Long	Whitehouse	Walton	Stewart





MANAGER: DANNY COWLEY

GK	PAUL FARMAN	○	1
	SEAN LONG	○	2
	SAM HABERGHAM	○	3
	ELLIOTT WHITEHOUSE	○	4
(C)	LUKE WATERFALL	○	5
	OLLIE PALMER	○	8
	MATT RHEAD	○	9
	MATT GREEN	○	10
	ELLIS CHAPMAN	○	12
	JORDAN WILLIAMS	○	14
	JAMES WILSON	○	15
	MICHAEL BOSTWICK	○	16
	LEE FRECKLINGTON	○	19
GK	JOSH VICKERS	○	21
	NEAL EARDLEY	○	23
	DANNY ROWE	○	24
	HARRY ANDERSON	○	26
	JAMIE McCOMBE	○	27
	NATHAN ARNOLD	○	28
	ALEX WOODYARD	○	30
	CAMERON STEWART	○	32
	DANIEL HORTON	○	33
	RYAN ALLSOP	○	--
	TOM PETT	○	--
	SCOTT WHARTON	○	--

## TEAM LINE-UPS



### MATCH OFFICIALS:

REFEREE:  
ANTONY COGGINS  
ASSISTANT REFEREES:  
NEIL SHARP & ABBAS KHAN  
FOURTH OFFICIAL:  
STEVEN RUSHTON

### ELSEWHERE IN SKYBET LEAGUE TWO:

ACCRINGTON STANLEY vs STEVENAGE  
CHESTERFIELD vs CRAWLEY TOWN  
COLCHESTER UNITED vs NEWPORT COUNTY  
FOREST GREEN ROVERS vs COVENTRY CITY  
GRIMSBY TOWN vs CHELTENHAM TOWN  
LUTON TOWN vs EXETER CITY  
MANSFIELD TOWN vs BARNET  
NOTTS COUNTY vs CREWE ALEXANDRA  
PORT VALE vs MORECAMBE  
WYCOMBE WANDERERS vs CARLISLE UNITED  
YEOVIL TOWN vs CAMBRIDGE UNITED

### NEXT UP AT SINCIL BANK:



vs CHELSEA U21s  
6TH FEBRUARY 2018 | 7.45PM

### NEXT UP ON THE ROAD:



vs CAMBRIDGE UNITED  
9TH FEBRUARY 2018 | 7.45PM



MANAGER: DAVID FLITCROFT

1	○	LAWRENCE VIGOUROUX	GK
2	○	BEN PURKISS	
3	○	CHRIS HUSSEY	
4	○	MATT PRESTON	
5	○	CHRIS ROBERTSON	
6	○	OLLY LANCASHIRE	
7	○	PAUL MULLIN	
8	○	JAMES DUNNE	
9	○	LUKE NORRIS	
12	○	WILL HENRY	GK
14	○	ELLIS IANDOLO	
15	○	TOM SMITH	
16	○	AMINE LINGANZI	
17	○	MARC RICHARDS	
18	○	DONAL McDERMOTT	
19	○	TIMI MAX ELSNIK	
20	○	KELLAN GORDON	
21	○	REICE CHARLES-COOK	GK
22	○	KAIYNE WOOLERY	
23	○	JOE ROMANSKI	
24	○	KYLE KNOYLE	
25	○	DION CONROY	
26	○	JORDAN YOUNG	
27	○	SCOTT TWINE	
28	○	STUART MOORE	
29	○	OLIVER BANKS	
30	○	KESHI ANDERSON	
31	○	MATTY TAYLOR	
32	○	ROLLIN MENAYESE	



# spiral

FROM SMALL... TO LARGE FORMAT PRINTING...

www.spiralcolour.com



...TO ULTRA LARGE FORMAT HOARDING



# spiral

www.spiralcolour.com  
www.bannerprintingandprint.co.uk  
www.hoardingprinting.com

Augustus Mill, Buckley Street,  
Macclesfield, Cheshire, SK11 6UH  
Tel: 01625 435 130







## FOR ALL THINGS MINI. SOPER OF LINCOLN.

PROUD SPONSOR OF LINCOLN CITY FOOTBALL CLUB.

SALES | SERVICE  
PARTS | BODYSHOP

SEARCH:  
SOPER OF LINCOLN MINI.



Official Fuel Economy Figures for the MINI John Cooper Works Hatch range: Urban 34.0-39.2 mpg (7.2-8.1 l/100km). Extra Urban 54.3-57.6 mpg (4.9-5.2 l/100km). Combined 44.8-49.6 mpg (5.7-6.3 l/100km). CO<sub>2</sub> Emissions 147-133 g/km. Figures are obtained in a standardised test cycle. They are intended for comparisons between vehicles and may not be representative of what a user achieves under usual driving conditions.

## FOR EVERYTHING BMW.



The Ultimate  
Driving Machine

PROUD SPONSOR OF LINCOLN CITY FOOTBALL CLUB.

- |                      |                        |                              |
|----------------------|------------------------|------------------------------|
| • New Car Sales      | • BMW i                | • Bodyshop                   |
| • Approved Used Cars | • Motability           | • Alloy wheel refurbishment  |
| • Business Sales     | • Soper service centre | • Free wheel alignment check |
| • SMART repairs      |                        |                              |

SEARCH: SOPER OF LINCOLN BMW.

Official fuel economy figures for the BMW X4: Urban 42.2-53.3mpg (6.7-5.3 l/100km). Extra Urban 49.6-60.1mpg (5.7-4.7 l/100km). Combined 46.3-57.6mpg (6.1-4.9 l/100km). CO<sub>2</sub> emissions 159-129g/km. Figures are obtained in a standardised test cycle. They are a guide only and may not be representative of what a user achieves under usual driving conditions.